

RUAGOLD



An Emerging Gold Explorer with Two Highly Prospective Land Packages in **NEW ZEALAND**'s Historical Goldfields

TSX-V: **RUA** • OTC: **NZAU**F • WKN: **A40Q**YC

www.ruagold.com

Exploration in **Two** Historic **High-Grade** Gold Districts

RUAGOLD

HAURAKI GOLDFIELD:
High-grade Epithermal Gold

HISTORIC PRODUCTION

15M oz. Au

60M oz. Ag

HISTORIC GRADE

15-30 g/t Au

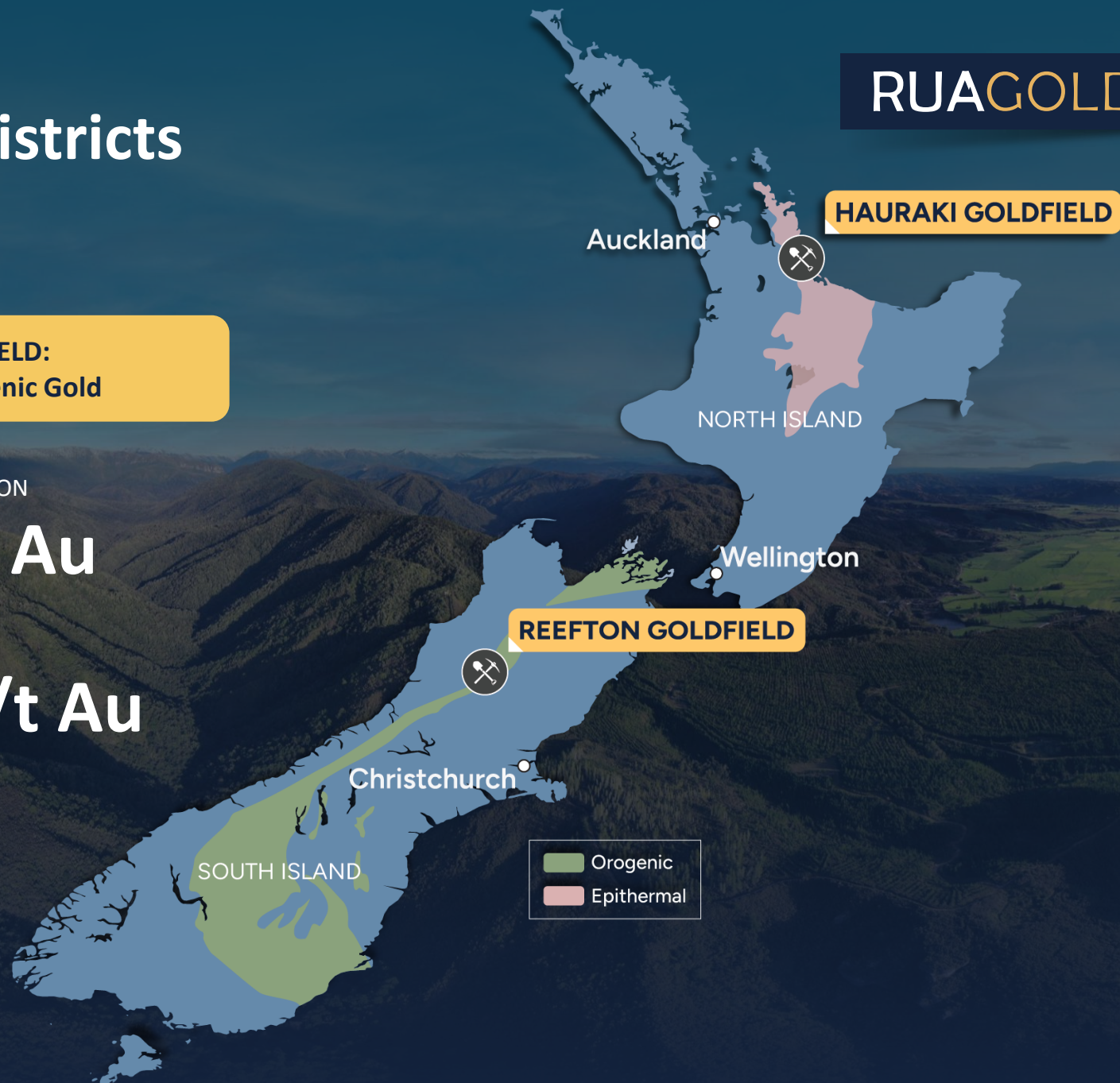
REEFTON GOLDFIELD:
High-grade Orogenic Gold

HISTORIC PRODUCTION

2M oz. Au

HISTORIC GRADE

9-50 g/t Au



REEFTON GOLDFIELD

RUAGOLD

Geology, History, and Potential

GEOLOGY

Orogenic gold deposits are among the **highest gold grade** deposits in the world

HISTORY

The Reefton Goldfield has produced **2 Moz gold at 9-50 g/t Au**

POTENTIAL

A land package that had **high-grade production** and is underexplored at depth



REEFTON GOLDFIELD

District Scale Land Package

RUAGOLD

AGGRESSIVE DRILL PROGRAM

3 Drill rigs
currently turning

SCALE

95%
of Reefton tenements

HISTORIC GOLD

~1Moz @ 25g/t
of past production

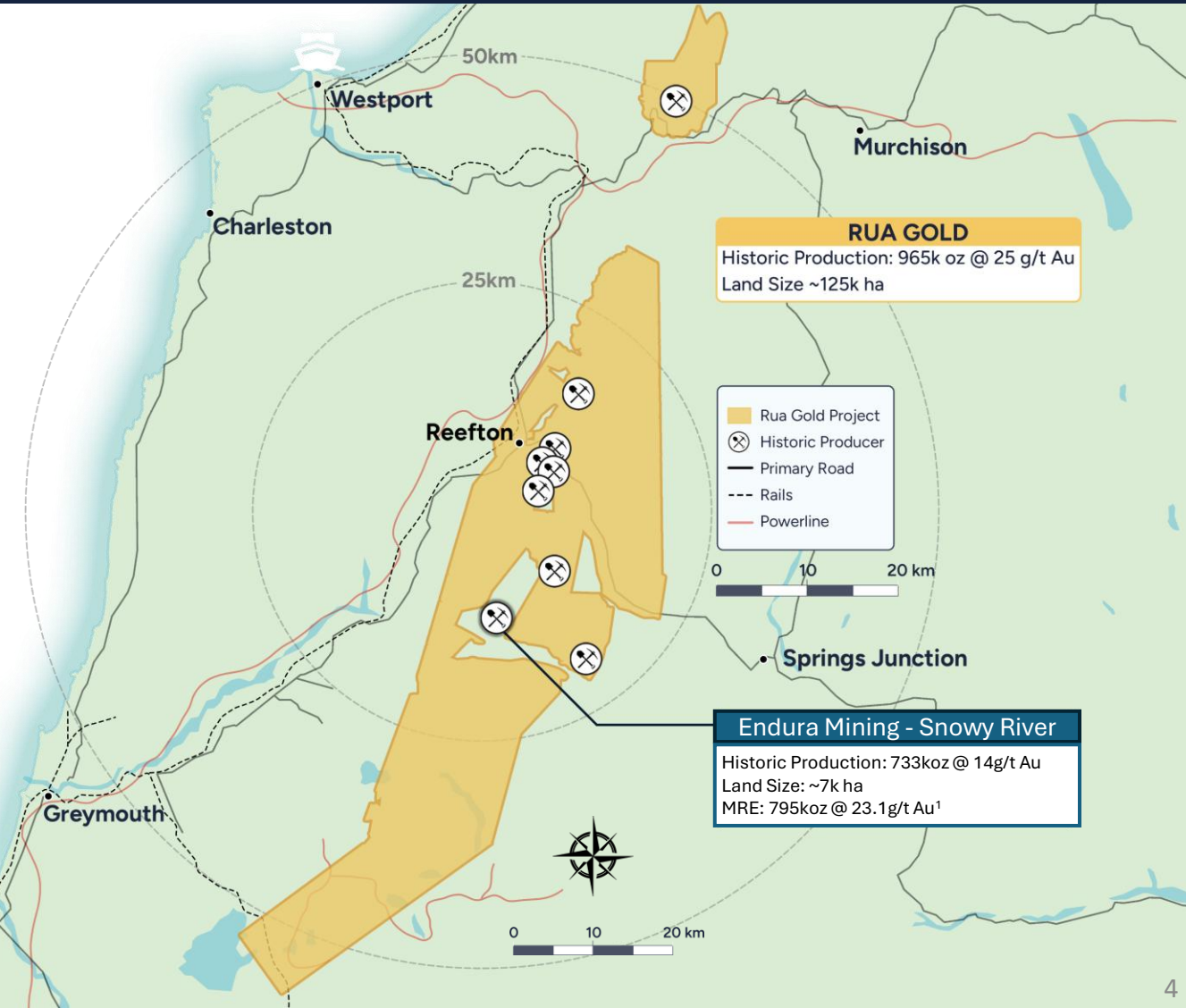
ACTIVE NEIGHBOURING MINE

Endura Mining
+A\$400M raised

US\$30M purchase
from OceanaGold

+795k oz.
Inferred resource¹
Permitted and under
construction

TASMAN SEA



1. Source: www.enduramining.com/our-projects/overview/

REEFTON GOLDFIELD

Historic Mine Sites

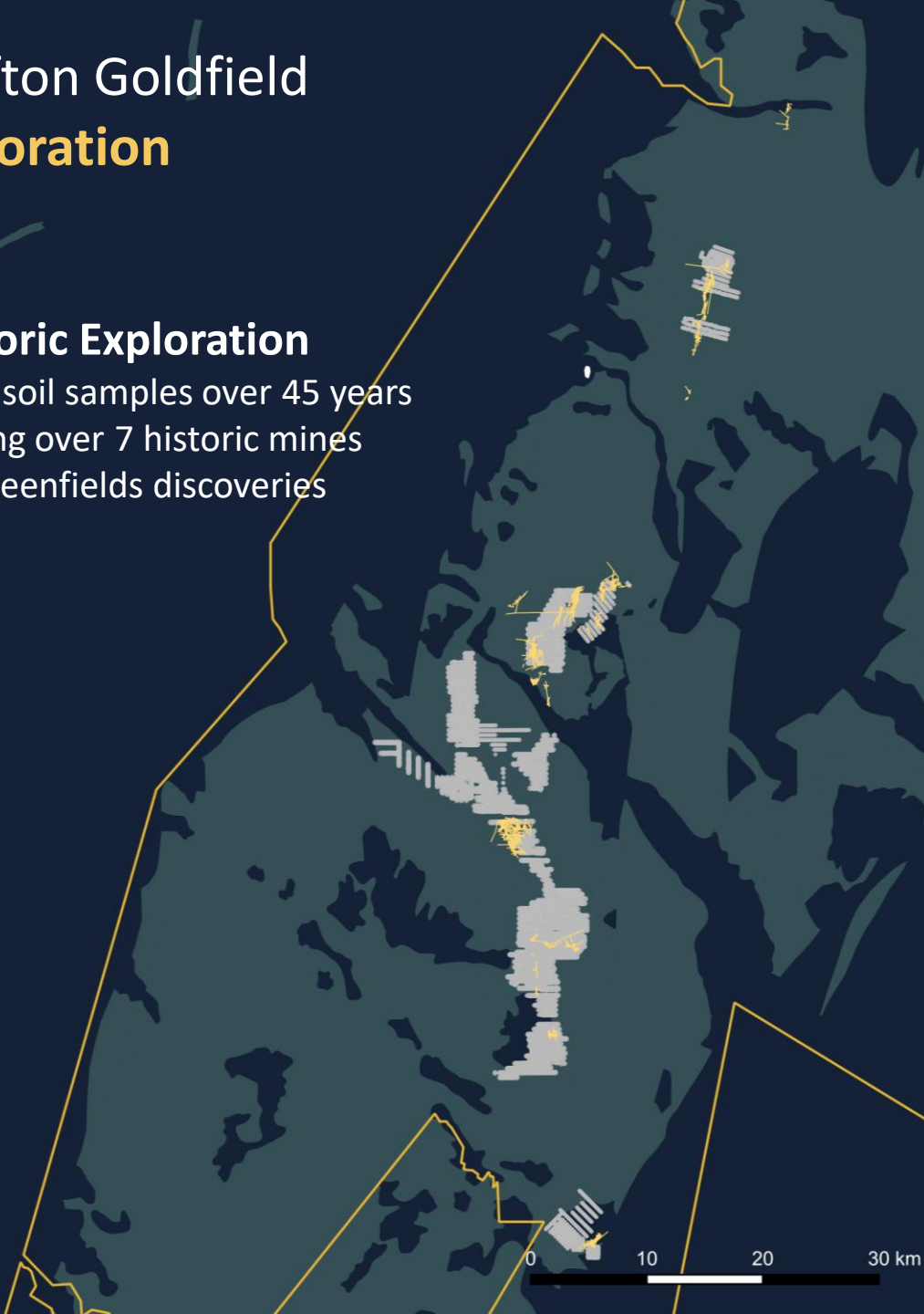


- RUA Projects
- RUA Active Drilling
- Other Properties

Reefton Goldfield Exploration

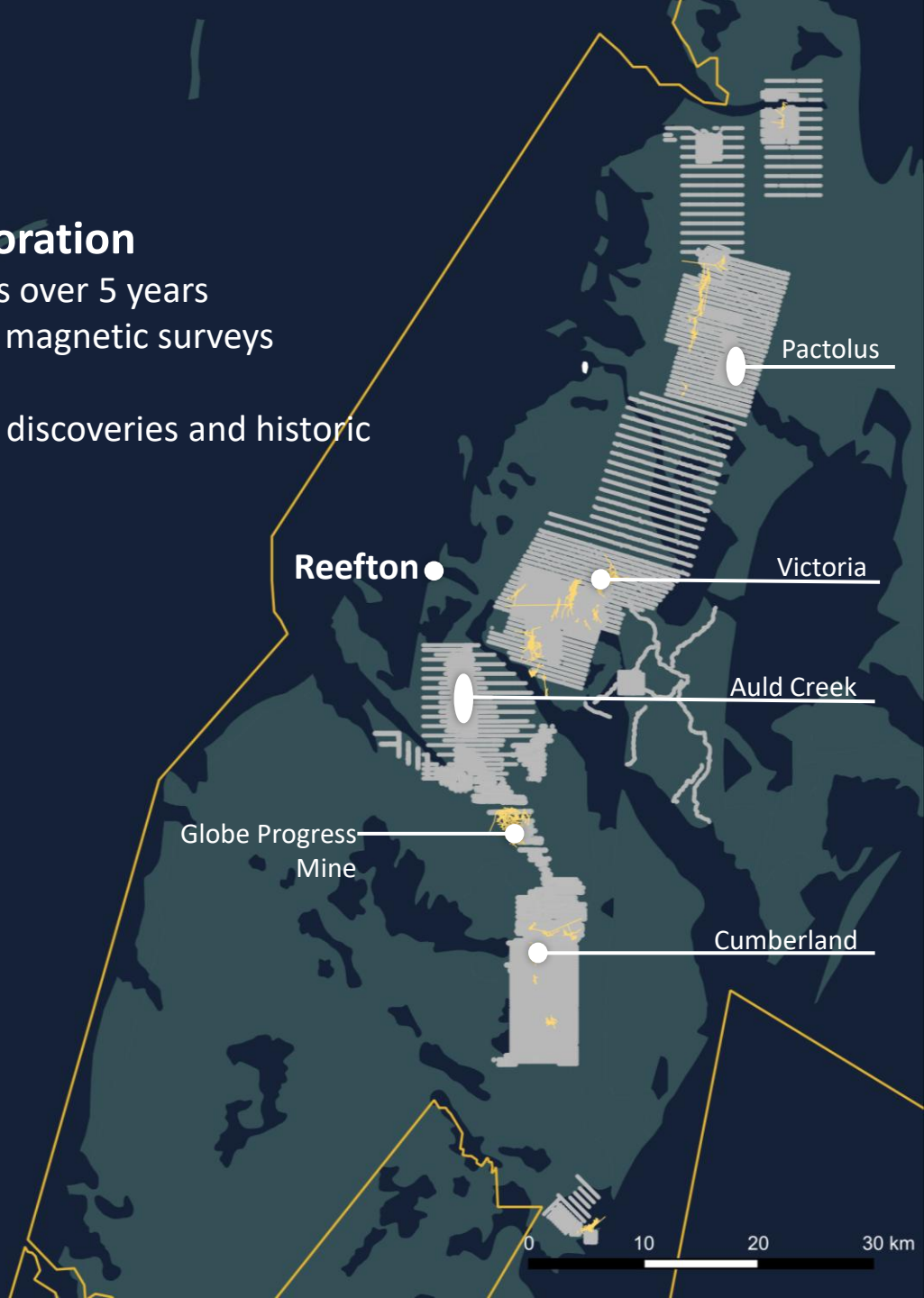
Historic Exploration

6018 soil samples over 45 years
Drilling over 7 historic mines
No greenfields discoveries



RUA Gold Exploration

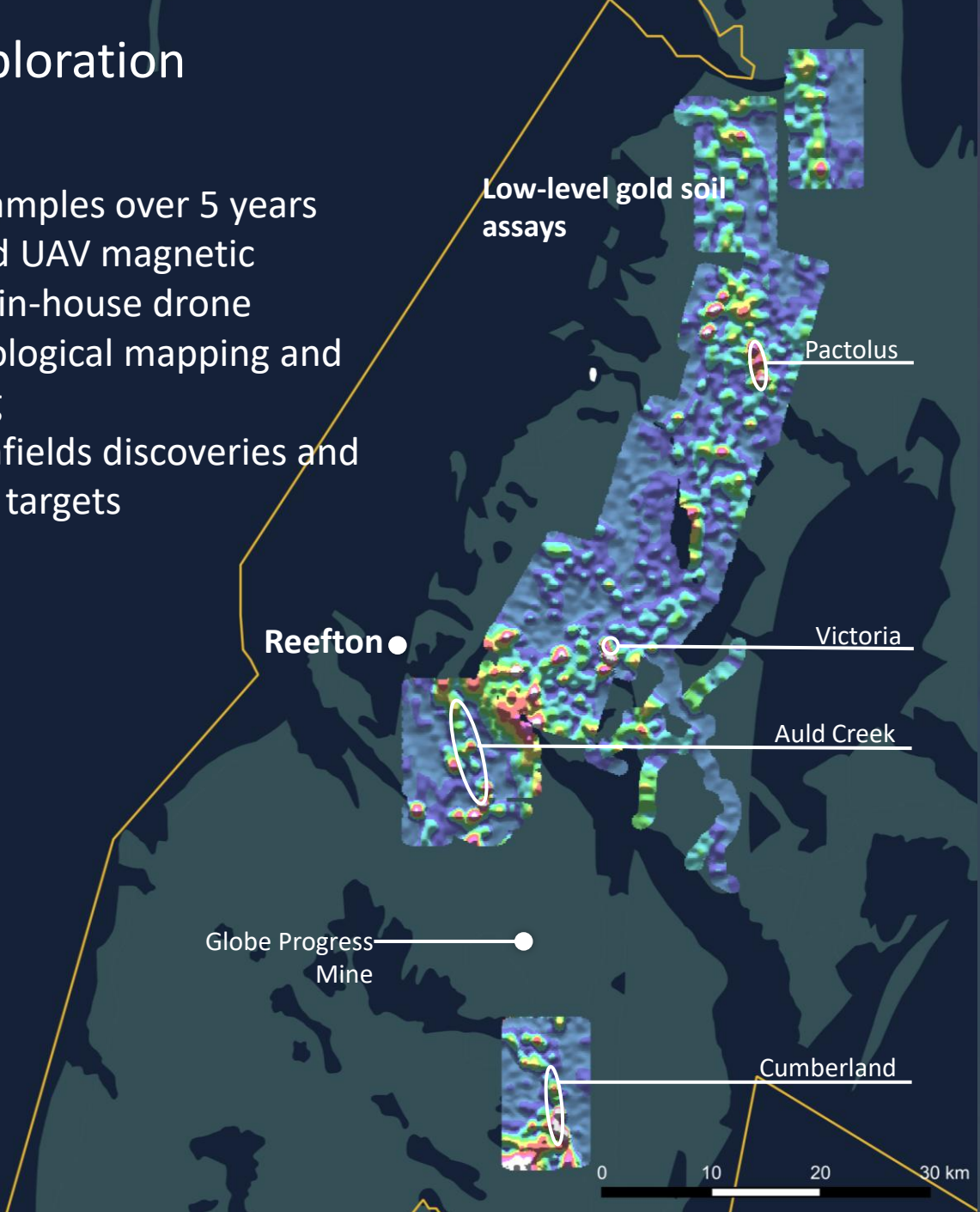
36,067 soil samples over 5 years
Ultra-detailed UAV magnetic surveys
3D Modelling
Drilling greenfields discoveries and historic mine targets



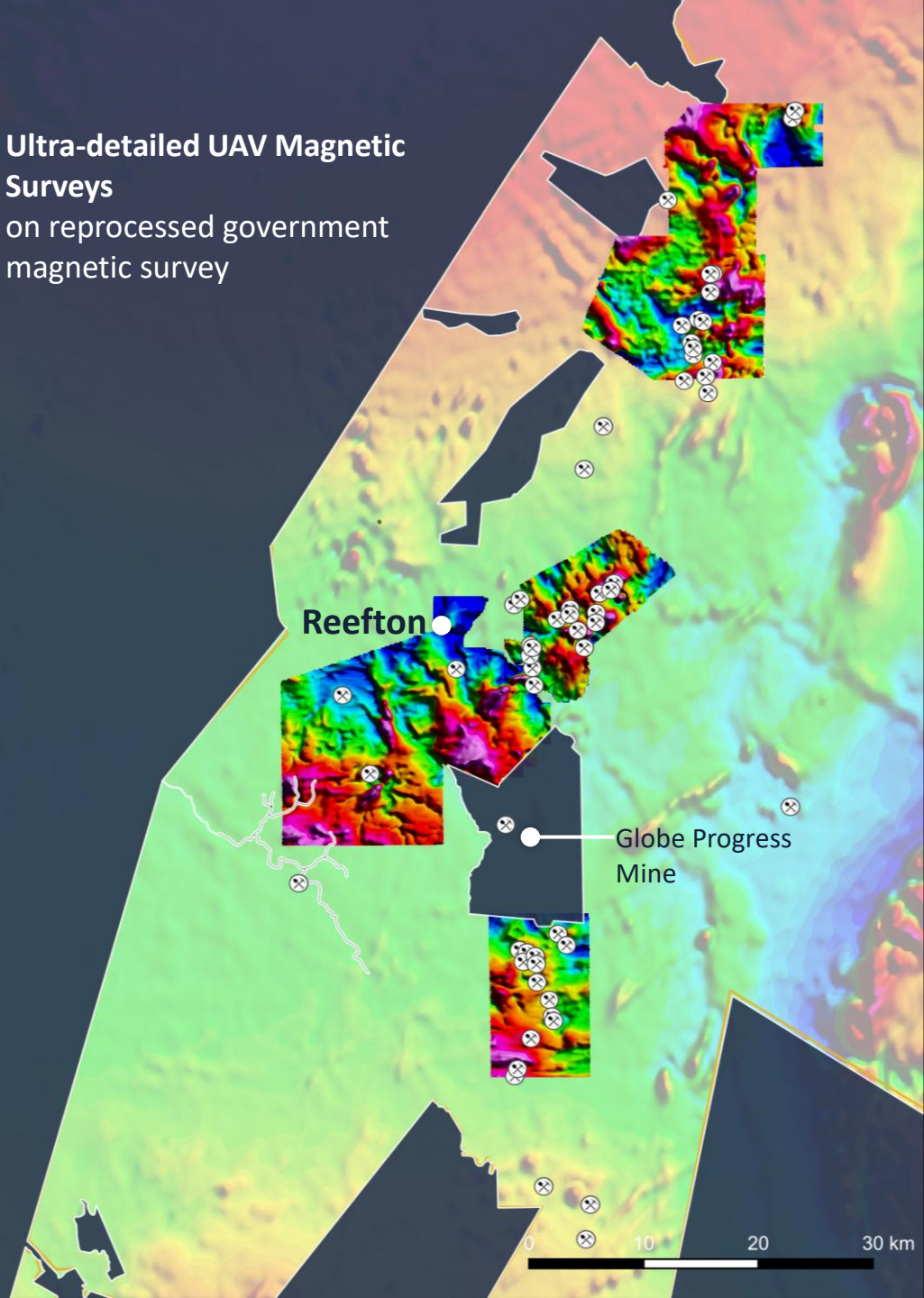
- Greenland Group
- Soil Samples
- Historic Mines
- Tenement Outline

RUA Gold Exploration

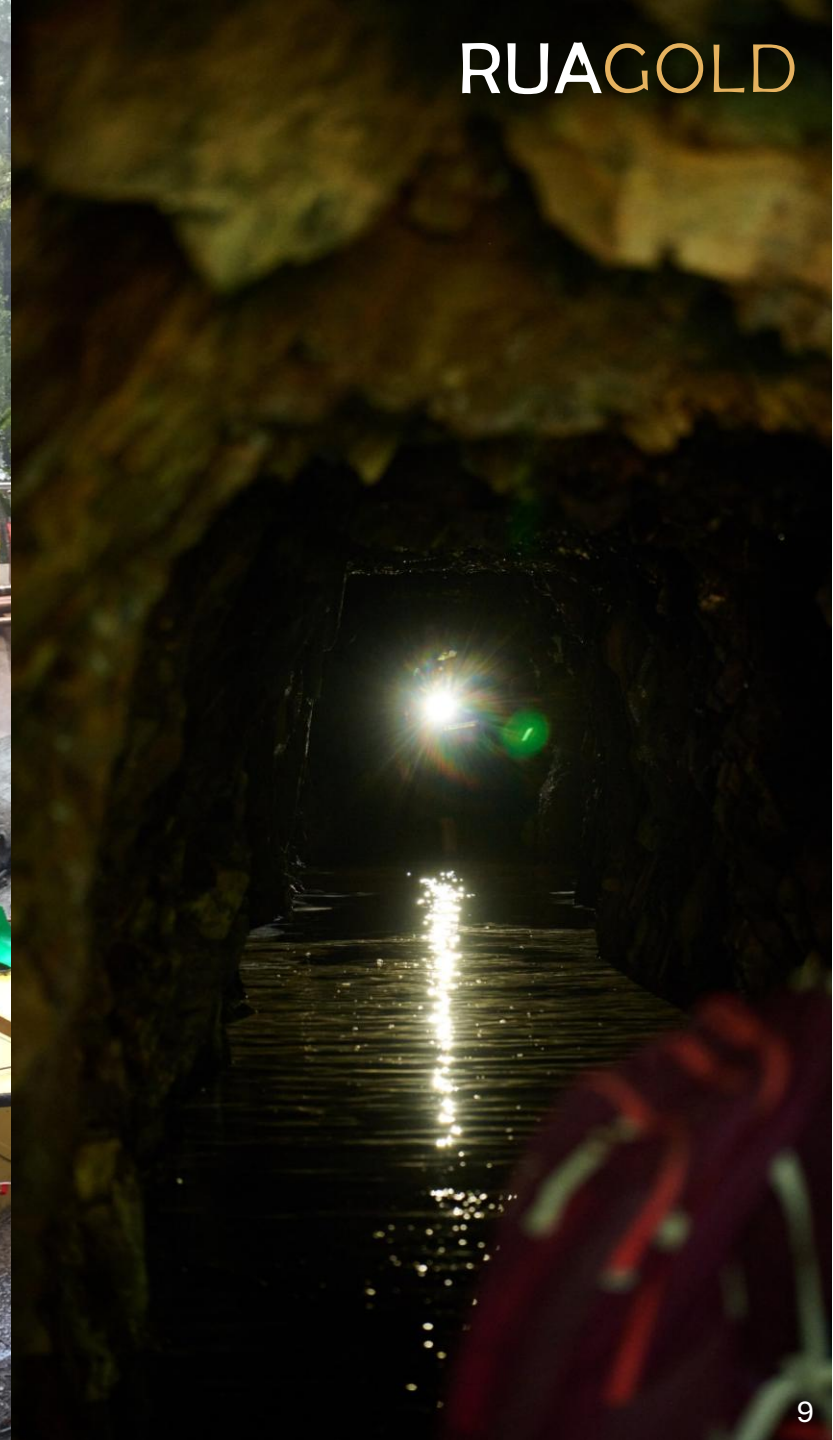
- 36,067 soil samples over 5 years
- Ultra-detailed UAV magnetic surveys with in-house drone
- Extensive geological mapping and 3D Modelling
- Drilling greenfields discoveries and historic mine targets



Ultra-detailed UAV Magnetic Surveys on reprocessed government magnetic survey



Exploration

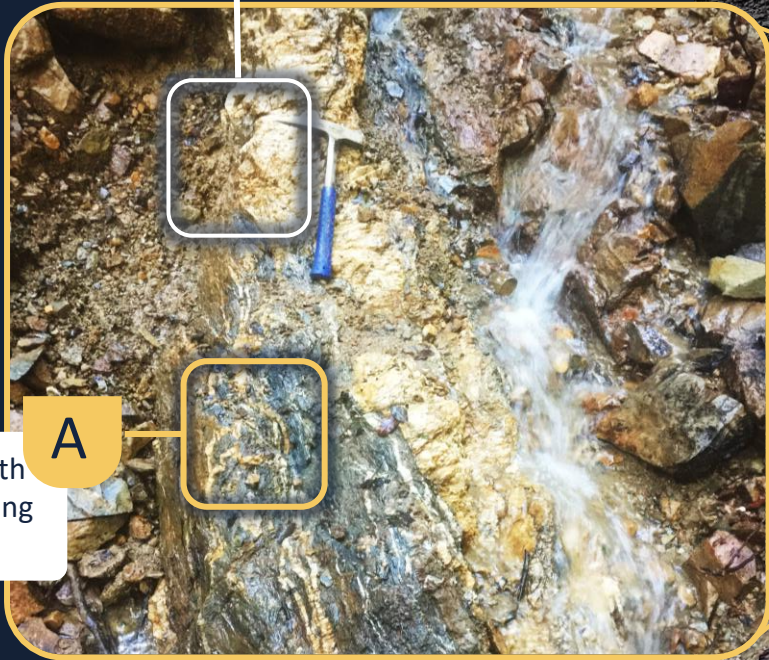


Pactolus

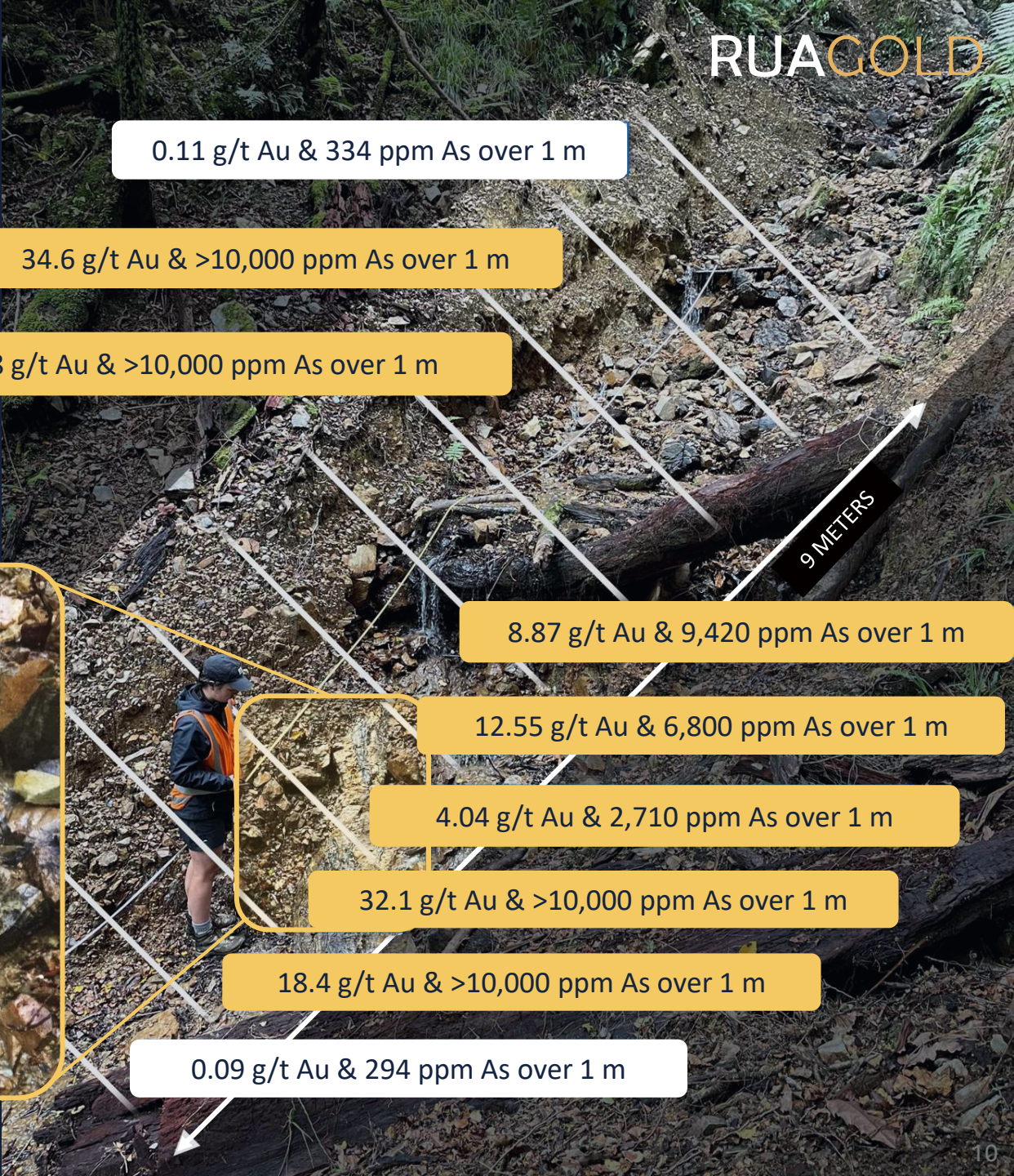
Greenfields Discovery

16.4 g/t au over 7m incl. 2 intervals of >1 oz/t au over 1 m

Arsenopyrite mineralized hydrothermal breccia containing fragments of argillite and greywacke cemented by quartz grading 4 g/t Au



Strongly sheared in quartz vein argillite with mm grains of arsenopyrite and pyrite grading 32 g/t Au



0.11 g/t Au & 334 ppm As over 1 m

34.6 g/t Au & >10,000 ppm As over 1 m

3.98 g/t Au & >10,000 ppm As over 1 m

8.87 g/t Au & 9,420 ppm As over 1 m

12.55 g/t Au & 6,800 ppm As over 1 m

4.04 g/t Au & 2,710 ppm As over 1 m

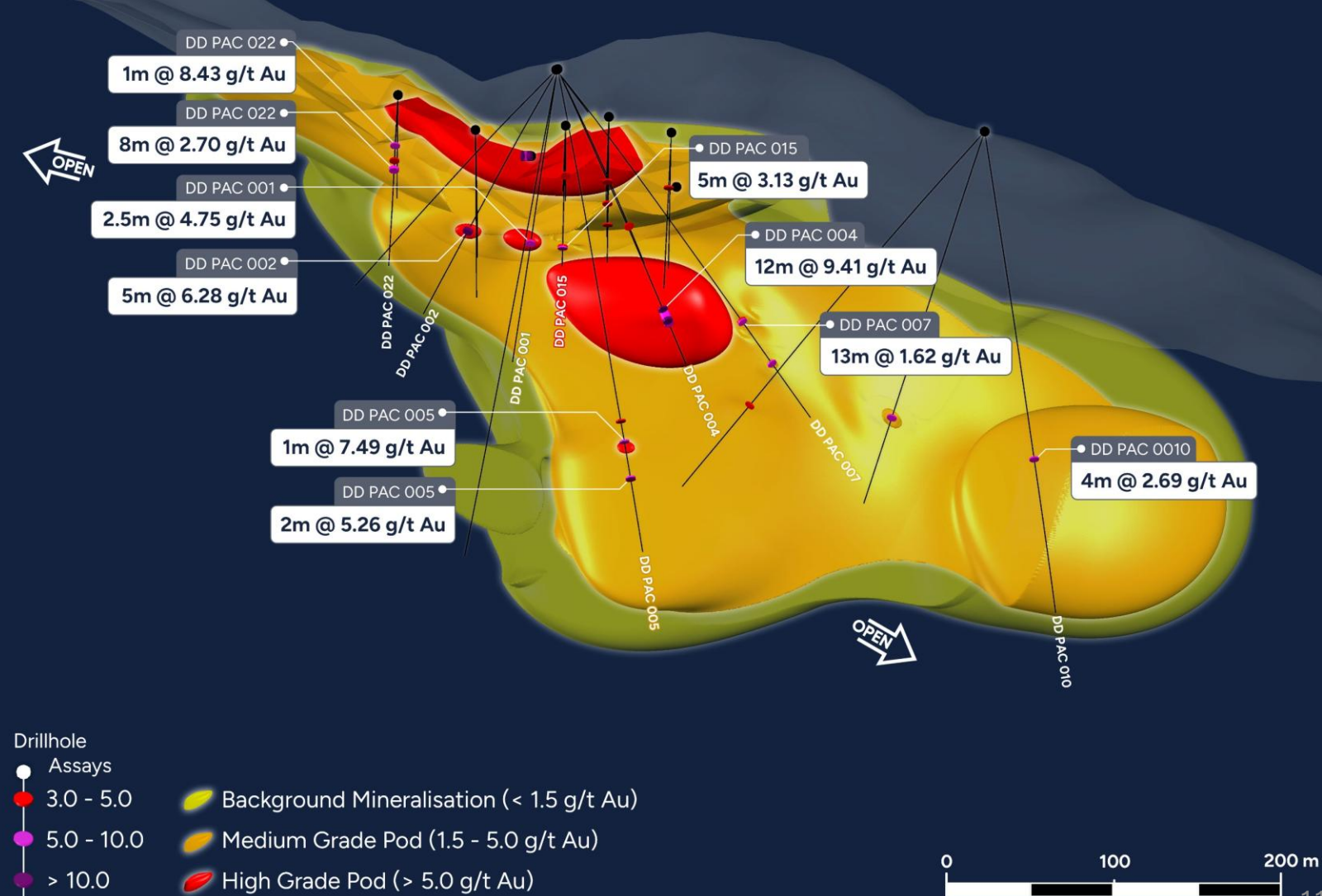
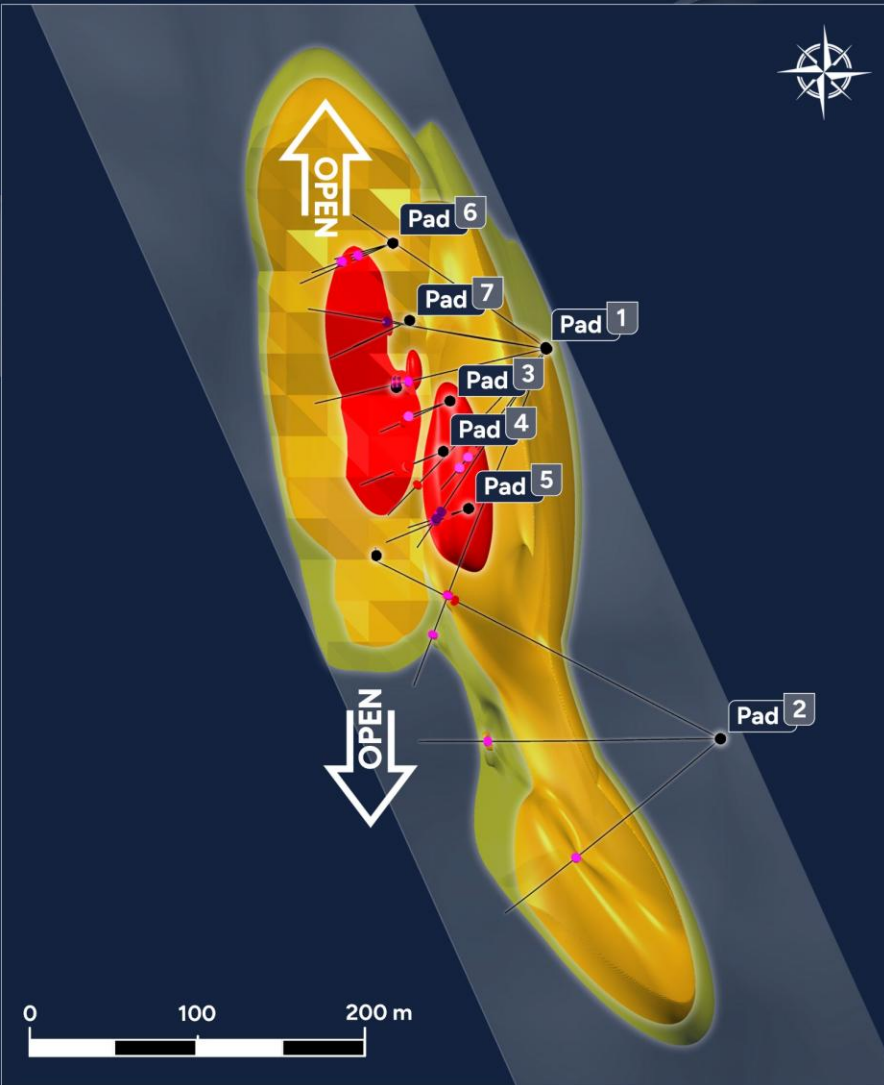
32.1 g/t Au & >10,000 ppm As over 1 m

18.4 g/t Au & >10,000 ppm As over 1 m

0.09 g/t Au & 294 ppm As over 1 m

9 METERS

Pactolus Mineralization Model



- Drillhole
- Assays
 - 3.0 - 5.0
 - 5.0 - 10.0
 - > 10.0

- Background Mineralisation (< 1.5 g/t Au)
- Medium Grade Pod (1.5 - 5.0 g/t Au)
- High Grade Pod (> 5.0 g/t Au)



Gold-Antimony Potential across the Reefton Goldfield

30km Strike Length of Au and Sb Deposits

RUAGOLD



Fiery Cross

52.3g/t Au, 16% Sb



Golden Treasure

8.18g/t Au, 26.9% Sb



Fiery Cross

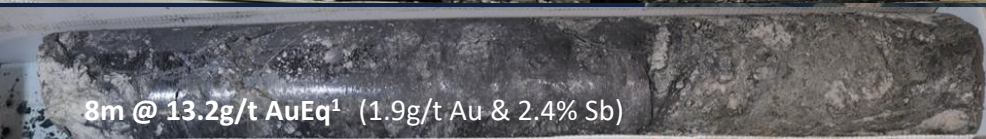
74.3g/t Au, 0.2% Sb



Golden Treasure

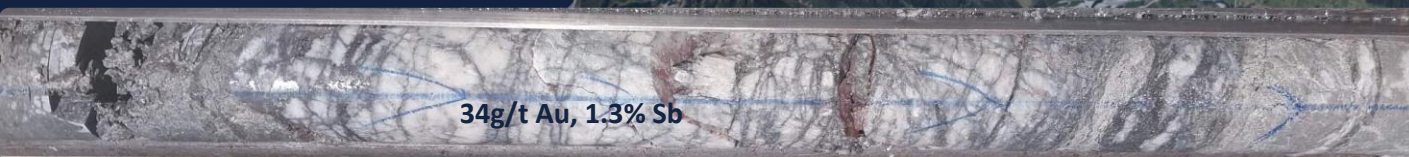
2.29g/t Au, 40.3% Sb

Auld Creek



8m @ 13.2g/t AuEq¹ (1.9g/t Au & 2.4% Sb)

Victoria (DD_VIC_042A)



34g/t Au, 1.3% Sb

Caledonia:
Rock: **93.9g/t Au, 11.8% Sb**

Fiery Cross:
Rock: **52.3g/t Au, 16% Sb**
Outcrop: **74.3g/t Au, 0.2% Sb**

Auld Creek (drill core):
8.1m @ **2.73g/t Au, 4.33% Sb**
12.4m @ **5.19g/t Au, 13.65% Sb**

Victoria (drill core):
0.3m @ 34g/t Au, 1.3% Sb

Golden Treasure (trench):
1m @ **12.4g/t Au 10.7% Sb**
1m @ **4.3g/t Au 37% Sb**
1m @ **13.3g/t Au 7.4% Sb**

Big River:
Trench: **1m @ 20.4g/t Au, 15.8% Sb**
Trench: **1m @ 28.1g/t Au, 20.6% Sb**

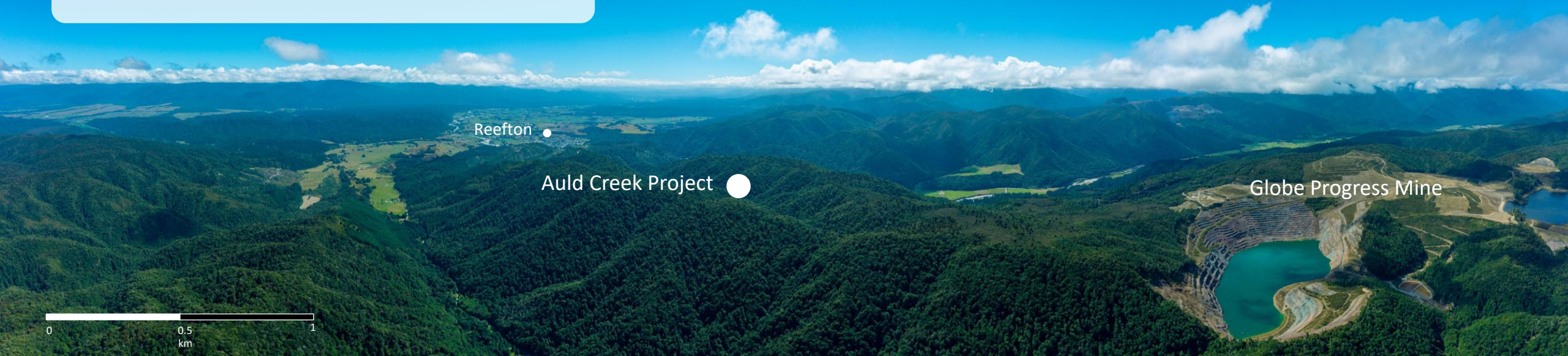
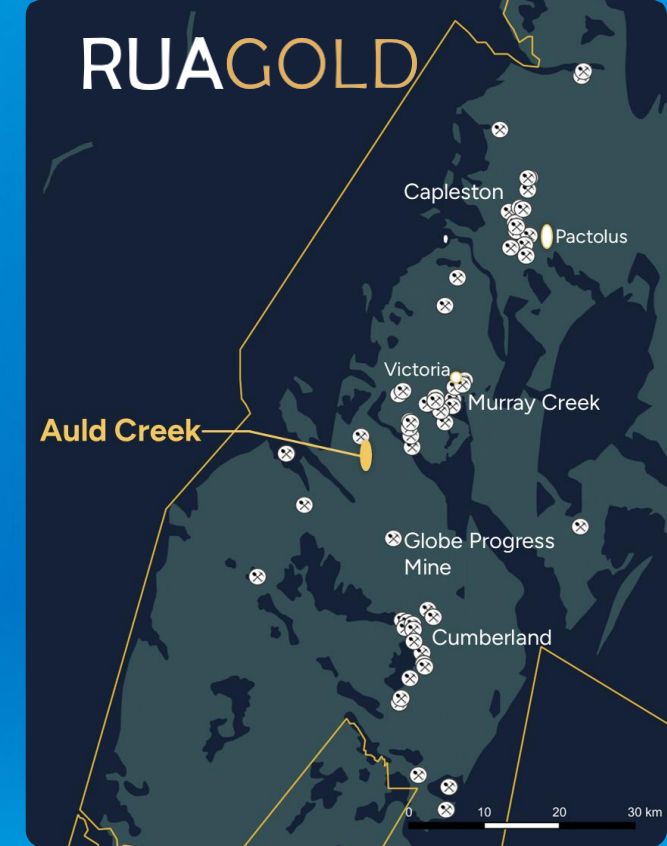
Globe Progress

Auld Creek Project

Inferred Resource 8Kt Sb @ 1.1% and 67koz @ 3.1g/t Au

- Situated between the Globe Progress mine, which historically produced 418koz @ 12.2g/t Au, and the Crushington group of mines that produced 515koz @ 16.3g/t Au.
- Three historic adits but no commercial production from the reefs
- 17 drill holes within permit prior to Siren Gold starting drilling in 2023
- 2024 MRE of **0.7Mt @ 3.1 g/t Au & 1.1% Sb for 67Koz & 8Kt Sb** (AuEq 110K oz)
- MRE restricted to two of the four known shoots. Fourth shoot (Fraternal North) is mineralized on surface but yet to be drill tested.

Resource expected to triple by the end of 2025.

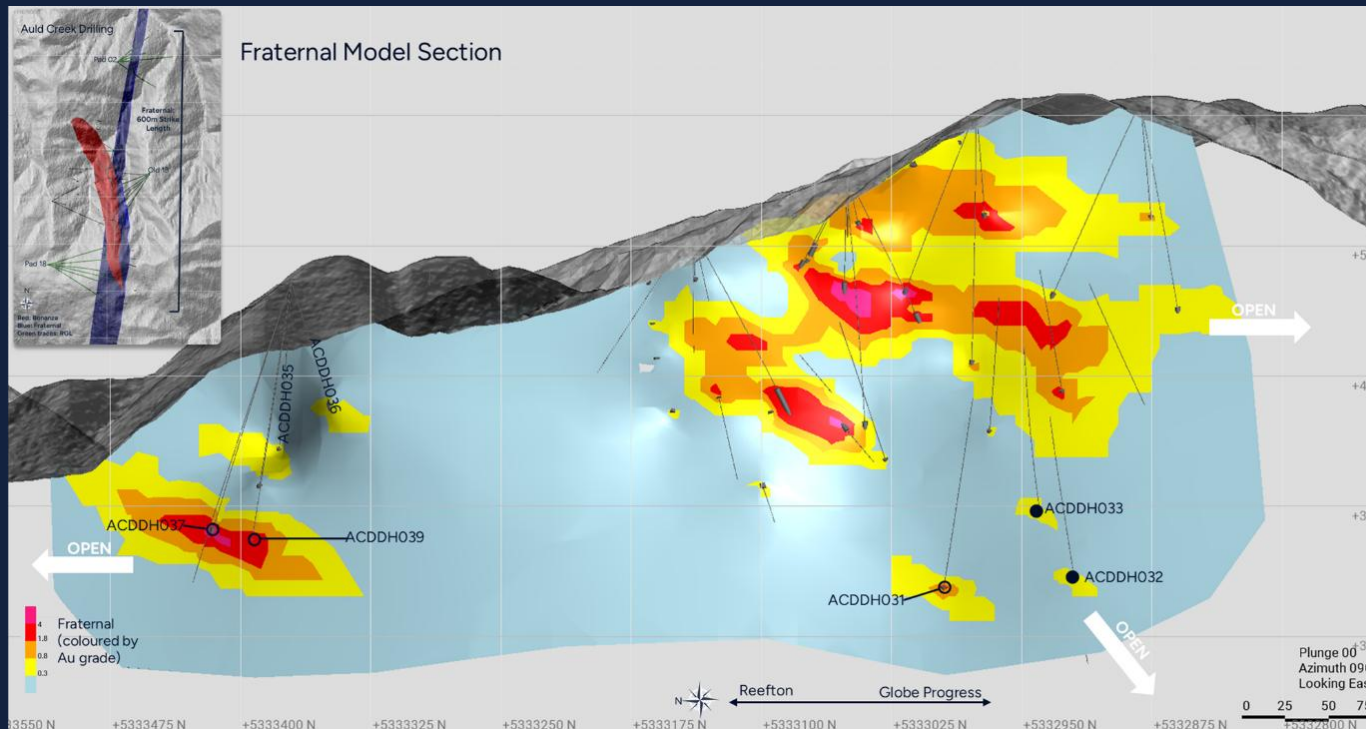


Active Drilling Program: Auld Creek

New Zealand's largest antimony resource.

Current resource of 110k @ 5.2g/t AuEq. Company targets tripling this by end of the year.

A 4,000 meters drill program is underway at Auld Creek with two drill rigs expanding the current resource both along strike and at depth.



Notable recent assays:

- ACDDH024: 12m @ 12.2g/t AuEq (1.9g/t Au & 2.4% Sb)
- ACDDH025: 8m @ 13.2g/t AuEq (2.2g/t Au & 2.2% Sb)
- ACDDH028: 1.3m @ 48.3g/t AuEq (13.3g/t Au & 8.1% Sb)
- ACDDH031: 2.1m @ 64g/t AuEq (5.5g/t Au & 13.1% Sb)
- ACDDH037: 8m @ 8.9g/t AuEq (6.2g/t Au & 0.6% Sb)
- ACDDH039: 17m @ 9.8g/t AuEq (3.6g/t Au & 1.5% Sb)

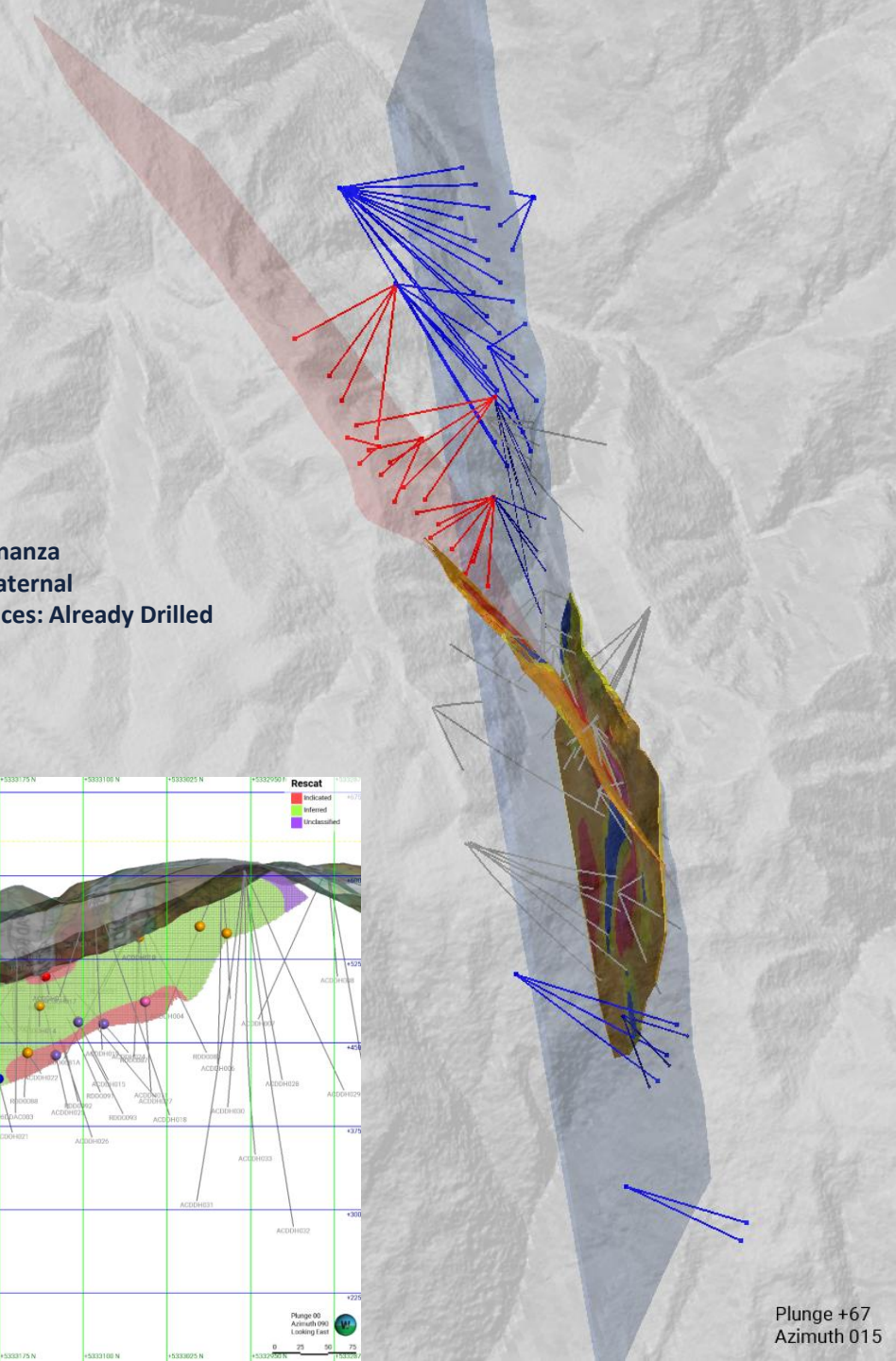
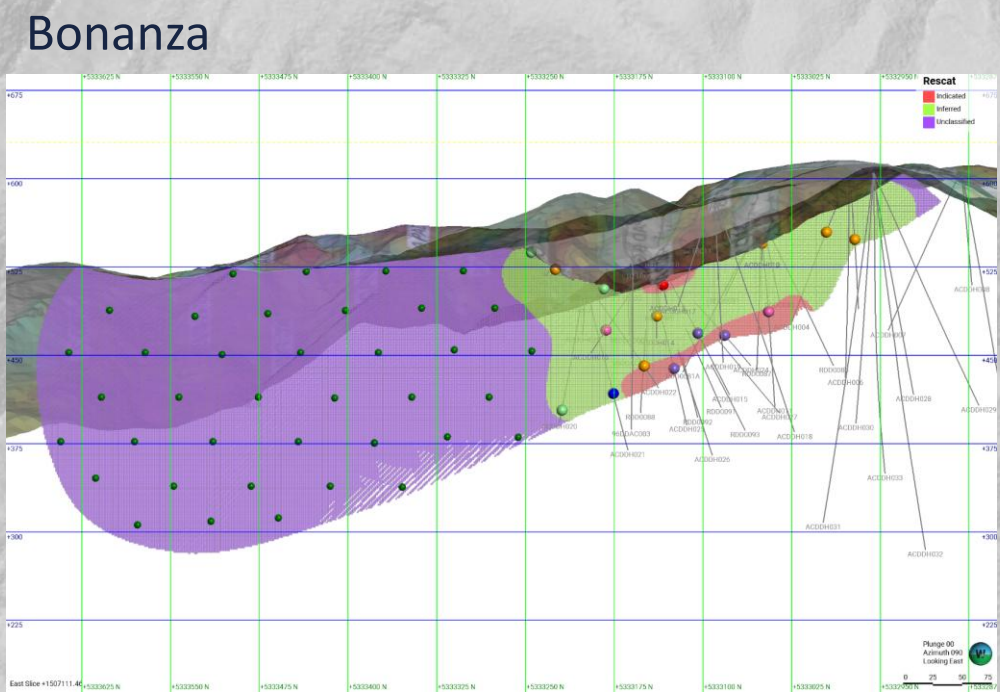
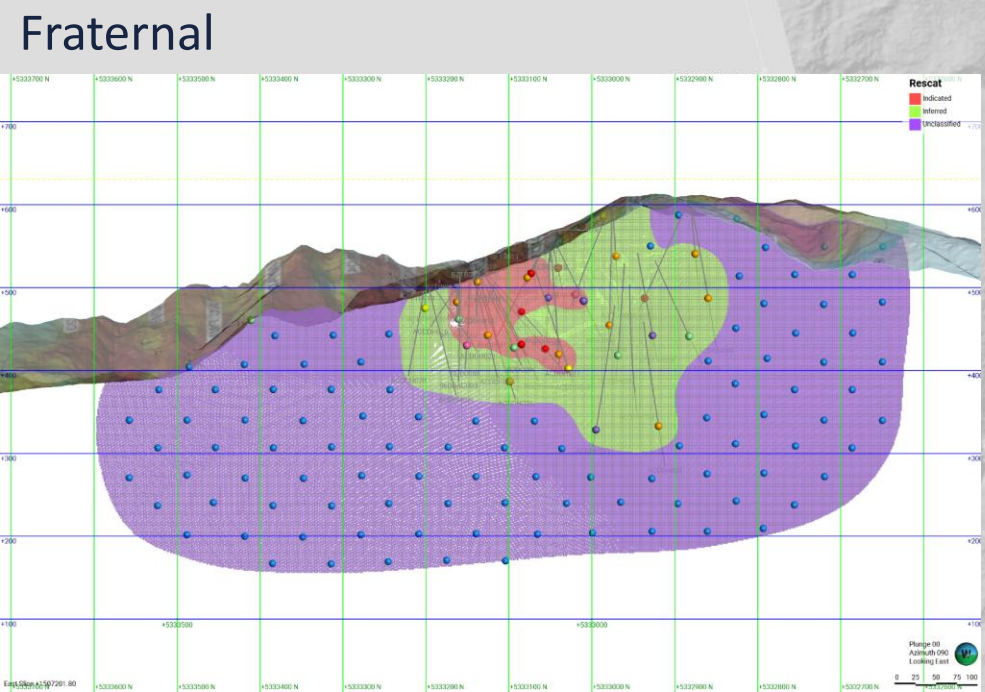
Conceptual Plan for Auld Creek Resource Expansion Drilling

AuEq = Au g/t + 4.3 x Sb% using a Au price of US\$2065/oz, Sb price of US\$34,300 per tonne and 85% recovery.

Auld Creek Drilling Forward Plan

First pass drilling Auld Creek Unclassified
2550m
Follow-up of mineralized intercepts
contemporaneously 1500m

Red: Bonanza
Blue: Fraternal
Grey traces: Already Drilled

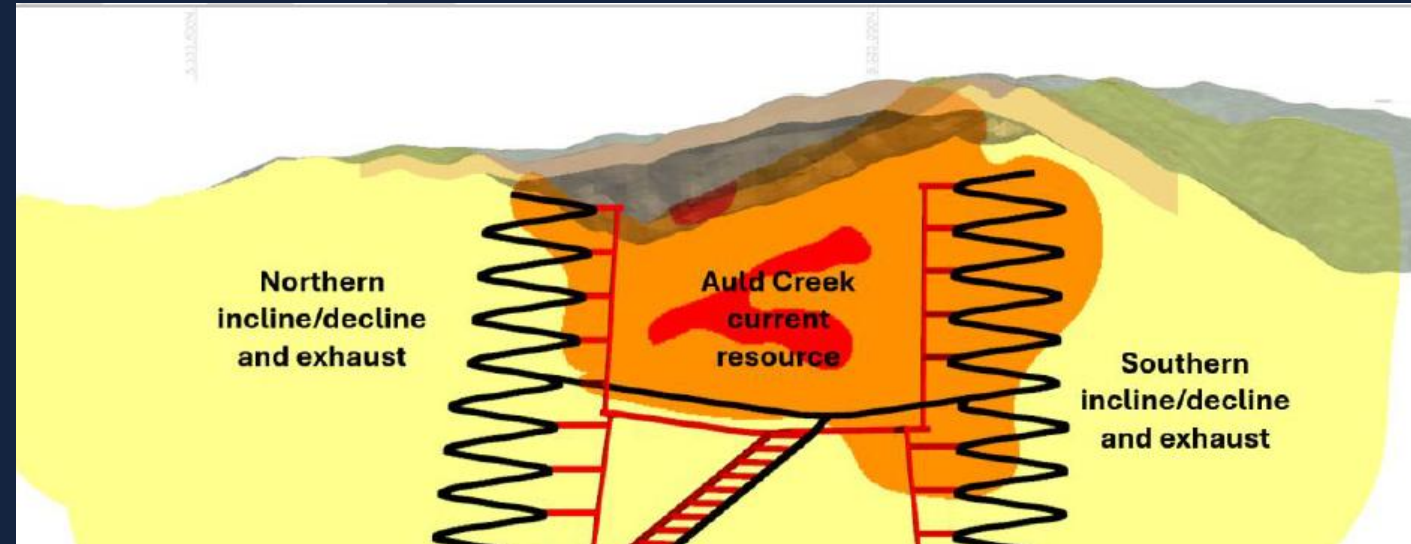


Plunge +67
Azimuth 015

Auld Creek Project

Development concept design

- Development of project description
- Project definition study (AMC)
- Underground mine
- 200,000 ounces
- Small narrow vein equipment
- 200 people in production
- Mine life 6-8 years
- Key infrastructure
 - Portal access
 - Processing plant
 - Waste facility
- Additional technical studies
 - Metallurgical
 - Project site engineering
 - Geotech & hydrogeology
 - Consent related studies



Auld Creek Project

Permitting Project

RUAGOLD

- Development focused management appointment
- Community and stakeholder engagement
- Background environmental studies have been commissioned in November 2025
- Establish consent project team with appointment of consultant partners
 - Mitchell Daysh
 - Mine Waste Management
- Historical environmental data collection
- Environmental monitoring program to commence in December 2025



Auld Creek Project

Permitting Project



Potential studies requirements identified

- Assessment of environmental effects
- Geochemistry
- Aquatic ecology
- Terrestrial ecology
- Water
- Noise & vibration
- Traffic
- Recreation
- Geotechnical
- Heritage
- Cultural
- Dust
- Hydrology
- Offsetting
- Economic impact assessment

Community and Stakeholder engagement

Reefton operations

RUAGOLD

In person

- Public Community meetings
- Scheduled meetings
- Affected party briefings
- Community event attendance

Digital

- Facebook
- LinkedIn
- Website

Print

- Regular newsletters
- Notice boards
- Local media



RUAGOLD

Simon Delander

Vice President

email: sdelander@ruagold.com

info@ruagold.com

Simon Henderson

COO and Director

email: shenderson@ruagold.com



Rua Gold

TSX-V: **RUA**

OTC: **NZAU**F

WKN: **A40Q**YC



Scan me!

www.ruagold.com

