

REEFTON GOLDFIELDS PROJECT UPDATE

RUAGOLD

May 2026

WWW.RUAGOLD.COM

TSX: RUA | NZX: RGI

OTC: NZAUF | WKN: A40QYC



About Rua Gold

Rua Gold is a minerals company at the forefront of the mining industry, specializing in gold exploration and discovery.

Historical mining in the Reefton Goldfield started in 1872, and by its close, had produced 2 million ounces of gold from high-grade underground operations in orogenic quartz vein systems.

Rua Gold holds 95% of the tenements in this district and is currently drilling multiple targets across the land package.

We drilled 1,600 metres during the month, our drilling delivery partners Alton Drilling are seeking staff in Reefton if you know of anyone looking for work [CLICK LINK](#)

For more information on Rua Gold, please reach out to our team by phone or email listed below.

News

Update on Rua Gold's Fast Track Referral Application

The Auld Creek Fast Track Referral Application is currently being reviewed by the Government and regulatory bodies. A decision regarding inclusion in Fast Track is expected in due course.

While this occurs, work continues on our Substantive permit application. Should we not be accepted on the Fast Track process, our application can still proceed through the standard RMA process.

Rua has established an liaison group which will meet monthly and provide the Council, Government agencies and regulators with progress updates on our permit application development.

Auld Creek Project Advisors

In early May, we were fortunate to gather all our advisors involved in the Auld Creek Fast Track process in Christchurch to discuss the next steps as we prepare for a substantive permit application.

Additionally, our mine operating team, along with the mine design and processing plant design teams, presented their vision of the mine as they work on our Pre-Feasibility Study (PFS).

This important session fostered alignment among the advisor groups and received positive feedback from everyone involved.

Many advisor groups will be visiting the Auld Creek project site again in the upcoming months to finalise their reports, which will be included in our application.



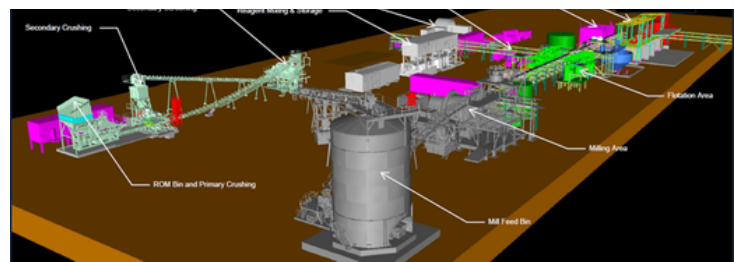
Pre-Feasibility Study (PFS)

The teams from Mining One, Pitch Black & Knight Piesold are ramping up their works as they pivot to the Pre-Feasibility Study following the completion of the Preliminary Economic Assessment which will be made available to the public in June.

The Rua Gold 19,000 metre drill program is feeding regular updates of the resource model to aid the development of the PFS.

Processing Plant Design

Design efforts are moving to the next phase for the Processing Plant, which will be located near the Auld Creek mine. It is being designed to have capacity to accommodate potential future deposits as they are developed.



Mine Design

The Mining One team visited Reefton in May to finalise the design plans for the mine.

They were accompanied by the Terra Firma team, dedicating several hours to determine the locations for the proposed portal and exploring various other options.



Community

Our Town Office is open on Tuesdays and Thursdays from 1:30 PM to 3:00 PM. We invite you to stop by and see us at 61A Broadway, Reefton.

A community meeting is scheduled for July 14th, 2026, at Dawson's Hotel. Additional details will be provided as the event date approaches.



Trees that Count

We are pleased to be partnering with Trees That Count to plant native trees on the West Coast of the South Island.

Trees That Count | Te Rahi o Tāne is an environmental not-for-profit dedicated to enabling native forest restoration throughout the motu.

Council Site Visits

In May, we were thrilled to host delegates from the West Coast Regional Council, Buller District Council, and Grey District Council. This event provided the groups with the opportunity to explore the proposed processing plant site and view the locations from above via helicopter.

After a briefing from the Rua team, the delegates visited the Reefton Engineering workshop to examine some of the proposed equipment intended for the site. The exploration team took this chance to share updates on the core samples they have been collecting as part of our drilling program.



Employee Profile

Dean Fergusson - Study Manager

This month, we are delighted to welcome Dean Fergusson to the Rua Gold team as our new Study Manager.

In this role, Dean will collaborate closely with the Mining One, Pitch Black, and Knight Piesold teams, coordinating their efforts as they advance the mine and processing plant designs.

Dean has dedicated several days onsite in Reefton to familiarize himself with the project, in addition to visiting Pitch Black's office in Brisbane for the PFS kick off meeting.

