

REEFTON GOLDFIELDS PROJECT UPDATE

RUAGOLD

April 2026

WWW.RUAGOLD.COM

TSX: RUA | NZX: RGI

OTC: NZAUF | WKN: A40QYC



News

Update on Rua Gold's Fast Track Referral Application

Rua Gold's Fast Track Referral application was submitted to the EPA portal in April and is currently undergoing review by the various regulatory bodies involved in the assessment. This marks the culmination of five months of dedicated effort from a team of independent advisors and members of the Rua Gold team.

The Rua Gold team remains engaged with our advisors to prepare a comprehensive application while we await the results of the Referral application.

Additionally, we are continuing to collect data and samples to establish our environmental background assessments as part of the application, alongside various other studies being conducted concurrently.

About Rua Gold

Rua Gold is a minerals company at the forefront of the mining industry, specializing in gold exploration and discovery. Historical mining in the Reefton Goldfield started in 1872, and by its close, had produced 2 million ounces of gold from high-grade underground operations in orogenic quartz vein systems.

Rua Gold holds 95% of the tenements in this district and is currently drilling multiple targets across the land package.

The Rua Gold team is growing with some new members joining the team over the coming months.

For more information on Rua Gold, please reach out to our team by phone or email listed below.

Community

The Reefton Town Office remains open on Tuesday's & Thursday's between 1:30pm – 3:00pm, located at 61A Broadway Reefton. Drop by and speak with one of the team about the project, we would love to see you there.

A community meeting will be held on 14th July in Reefton with further details to be shared as the event draws closer.



NZX Investor Day

Our Vice President, Simon Delander, participated in the NZX Investor event in Auckland in April, where he delivered a presentation on the Company. It was a pleasure to connect with several Rua Gold investors from New Zealand during the event. This industry gathering was an excellent opportunity for the mining and extractives sector, and we look forward to similar events in the future.

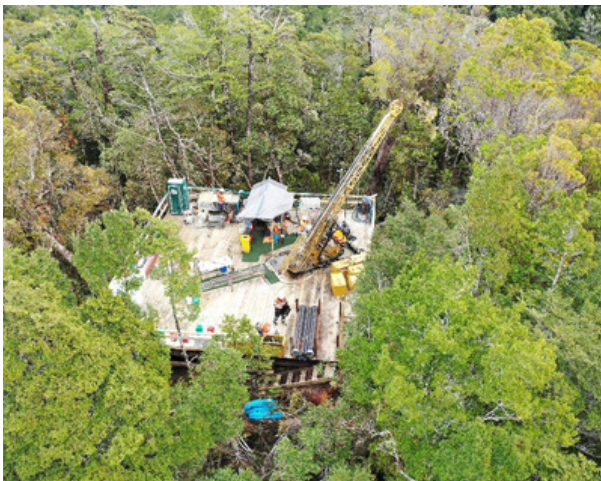


Preliminary Economic Assessment

The Auld Creek Preliminary Economic Assessment (PEA) is approaching its final stages and will soon be released.

We have begun work on a Pre-Feasibility Study (PFS) in collaboration with our partners, Mining One and Pitch Black Group.

We expect the PFS to be completed later this year, to support our Substantive Fast Track Application.



Sponsorship & Donations

Rua Gold is pleased to announce a commitment to support the AusIMM's Student Endowment Fund. The donation will go towards future professionals of our industry as they advance their tertiary studies.

We are also pleased to be supporting the upcoming annual AUSIMM conference.

Rua Gold were also pleased to be able to sponsor the upcoming Reefton Fire Brigade community engagement event.

Drilling Progress

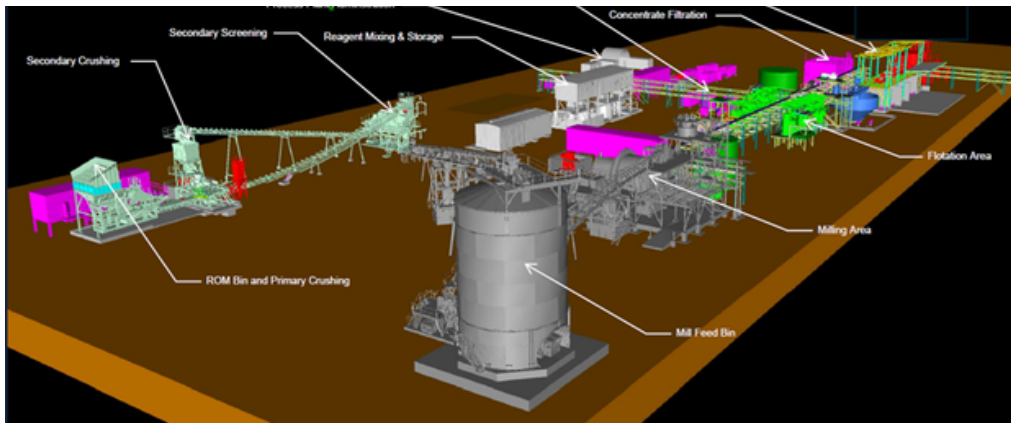
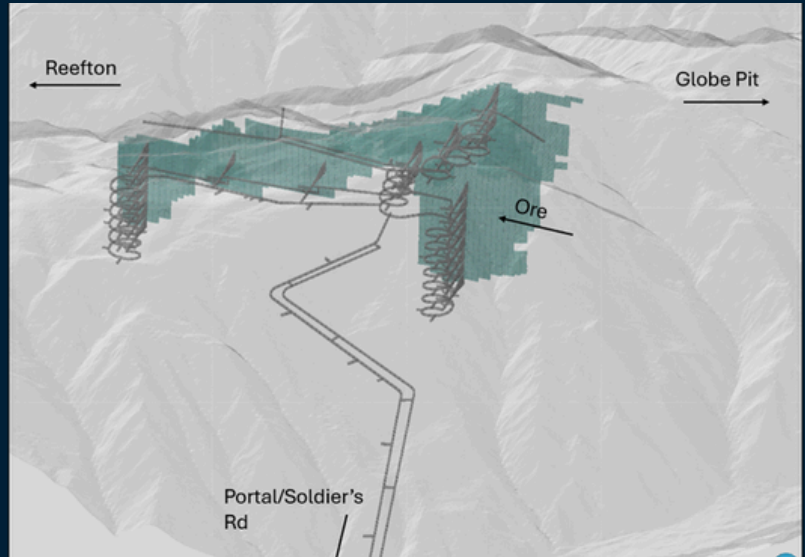
5 drill rigs continue to gather information on the Auld Creek deposit high in the hills above Reefton. An additional rig is planned to commence operation next month.

In April, the team drilled over 2700 metres in the Reefton Goldfields with 2500 of those just on Auld Creek.

Mine Design

Contract partners Mining One have continued to work on the finalisation of the mine design through the PEA process. An indicative mine design is outlined in the diagram attached.

Our current plans include a small light touch foot print in the DoC estate of approx. one hectare, part of that one hectare is already disturbed for our exploration drilling program and an existing access road.



Processing Plant Design

Pitch Black Group are in the final stages of the processing plant design for the Auld Creek Project. It is anticipated that this processing plant will be used for the Auld Creek deposit as well as any subsequent deposits mined by the Rua Gold team.

Employee Profile

Simon Delander
Vice President – Risk, Sustainability & Regulatory Affairs

Simon joined Rua Gold in late 2025 as part of the Executive Team. Simon works closely with the Reefton team and is the lead on the permitting project for Auld Creek. His role sees him regularly interfacing with the Reefton locals, government, stakeholders, investors while overseeing the environmental studies for the Fast Track application.

He has worked on a number of New Zealand mining projects and is also heavily involved in the NZ Minerals Council and NZ Mine Rescue Service.

