



RUAGOLD

Auld Creek Project
Reefton Community Meeting
March 2026

NZX: **RGI** TSX: **RUA** OTC: **NZAU** WKN: **A40QYC**

www.ruagold.com

Auld Creek Project Company Update

RUAGOLD

- Community, stakeholder & regulator engagement well underway.
- Submitting a Fast Track referral application in the coming weeks.
- Our team have worked with a group of 30 consultants to develop the referral application.
- Our exploration & drilling contractors team have been working in the hills above Reefton, 19,000 metres of drilling program underway.
- Preliminary Economic Assessment (PEA) underway and further studies planned.
- Rua Gold listed on the NZX last month and encouraged to see New Zealanders on our share register.



Auld Creek Project

Community and Stakeholders

RUAGOLD

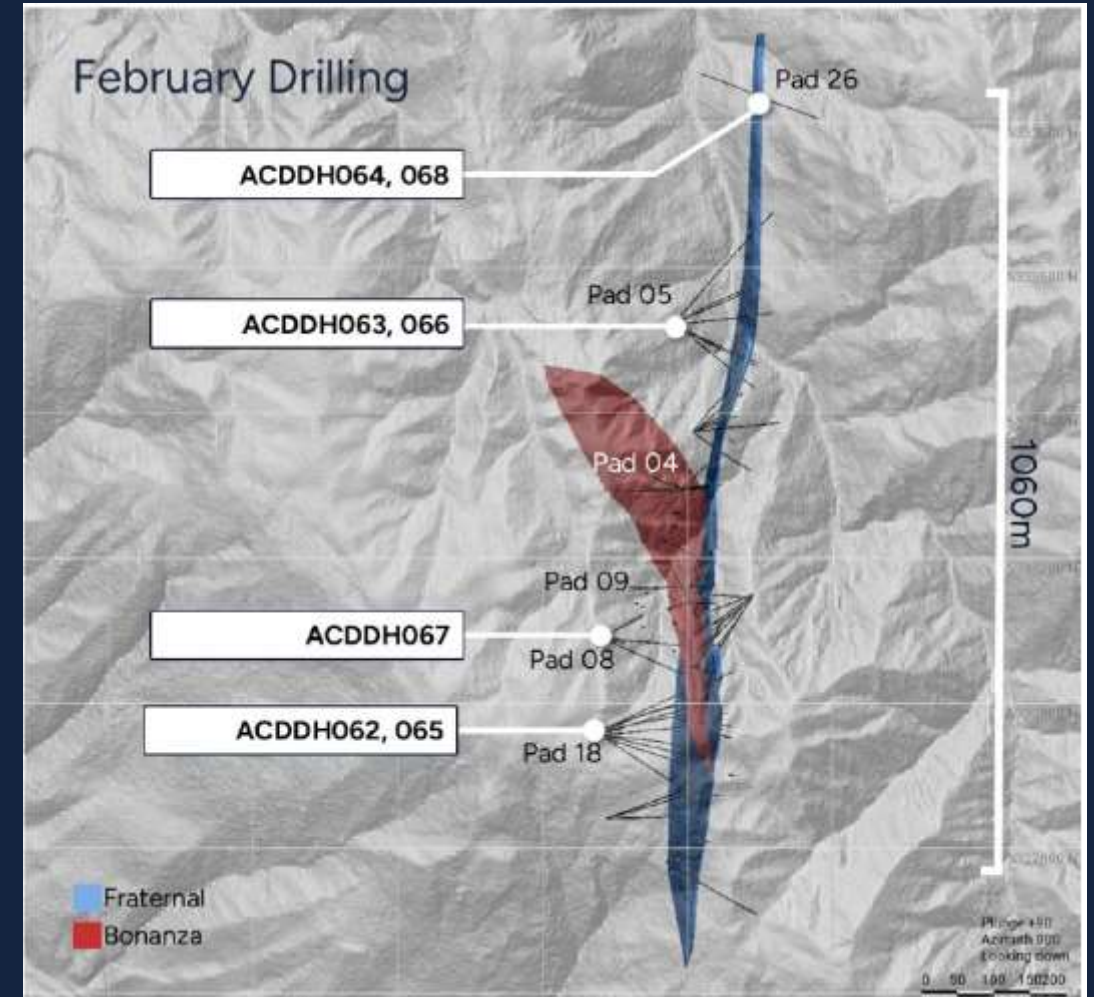
- Stakeholder engagement strategy
- Community meetings held and will continue
- Stakeholder engagement ramping up – over 280 so far
- Regulator, Council and Iwi engagements
- Temporary town office opening – 61A Broadway
- Open approach to engaging with stakeholders
- Social impact assessment work commenced
- Notifications of intent to submit referral application completed
- Community support and involvement
- Dialogue with BDC on accommodation and town infrastructure



Auld Creek Project

Exploration

- Auld Creek is already New Zealand's largest known gold antimony (Sb) resource.
- The current Auld Creek MRE includes:
 - 54koz Indicated @ 5.7 AuEq
 - 148koz Inferred @ 3.7 AuEq
- Target 19,000 metres drill program during 2026
- Strong focus on Auld Creek
- Reefton team welcoming new staff in coming months
- Alton Drilling and Eco Drilling - 4 drill rigs operating



Auld Creek Project Project Information

RUAGOLD

Exploration Phase: 2020 – 2025

Feasibility and Environmental Assessment Phase: 2025-2026

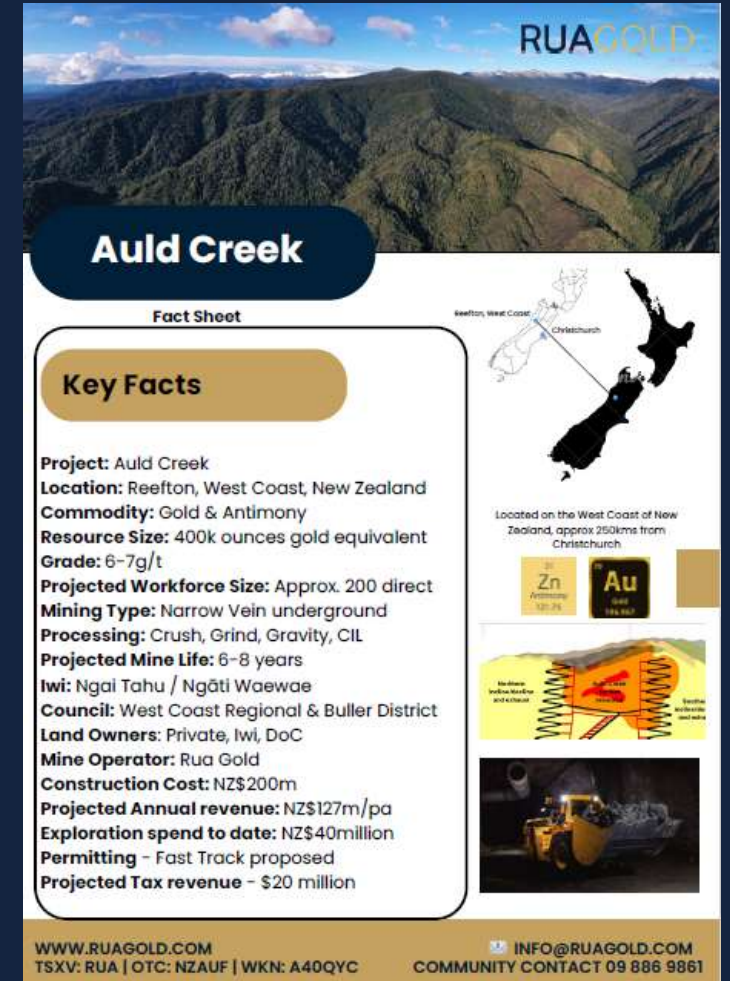
Construction and Development Phase: 2027 - 2028

Production Start: Late 2028

Operational Phase: Estimated at 6-8 years, depending on resource availability and mining access.

Rehabilitation Phase: Estimated at 2-5 years or until rehabilitation criteria is met and agreed by regulators and Iwi. Post land use is expected to be forestry and agricultural.

Minerals Extracted: Gold and Antimony



Auld Creek

Fact Sheet

Key Facts

- Project:** Auld Creek
- Location:** Reefton, West Coast, New Zealand
- Commodity:** Gold & Antimony
- Resource Size:** 400k ounces gold equivalent
- Grade:** 6-7g/t
- Projected Workforce Size:** Approx. 200 direct
- Mining Type:** Narrow Vein underground
- Processing:** Crush, Grind, Gravity, CIL
- Projected Mine Life:** 6-8 years
- Iwi:** Ngai Tahu / Ngāti Waewae
- Council:** West Coast Regional & Buller District
- Land Owners:** Private, Iwi, DoC
- Mine Operator:** Rua Gold
- Construction Cost:** NZ\$200m
- Projected Annual revenue:** NZ\$127m/pa
- Exploration spend to date:** NZ\$40million
- Permitting:** Fast Track proposed
- Projected Tax revenue:** \$20 million

Reefton, West Coast | Christchurch

Located on the West Coast of New Zealand, approx 250kms from Christchurch

Zn Antimony 12.2% | Au Gold 10.6g/t

No direct surface mining and/or haul

Surface infrastructure and waste

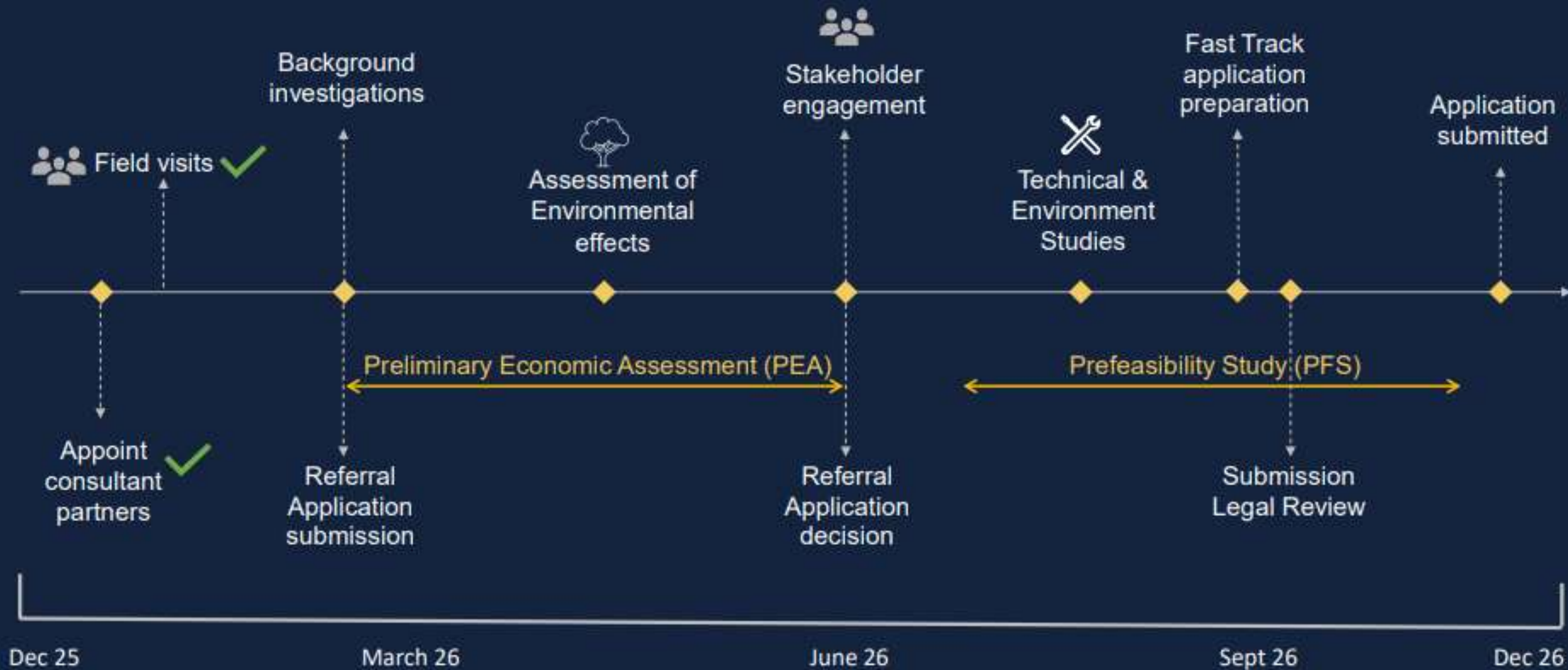
WWW.RUAGOLD.COM
TSXV: RUA | OTC: NZAUF | WKN: A40QYC

INFO@RUAGOLD.COM
COMMUNITY CONTACT 09 886 9861

Reefton Project – Auld Creek

Fast Track Project Timeline

RUAGOLD



Auld Creek Project Community Support

RUAGOLD





RUAGOLD

Sponsored Community Golf Tournament
Thursday 12th February 5pm
Ambrose format, any one welcome
Free entry and Free BBQ after
Prizes for 1st, 2nd & 3rd



**STUDENT
SCHOLARSHIP
RECIPIENT**

Environmental Geochemistry
for Sustainable Mining
MONIQUE WEBER

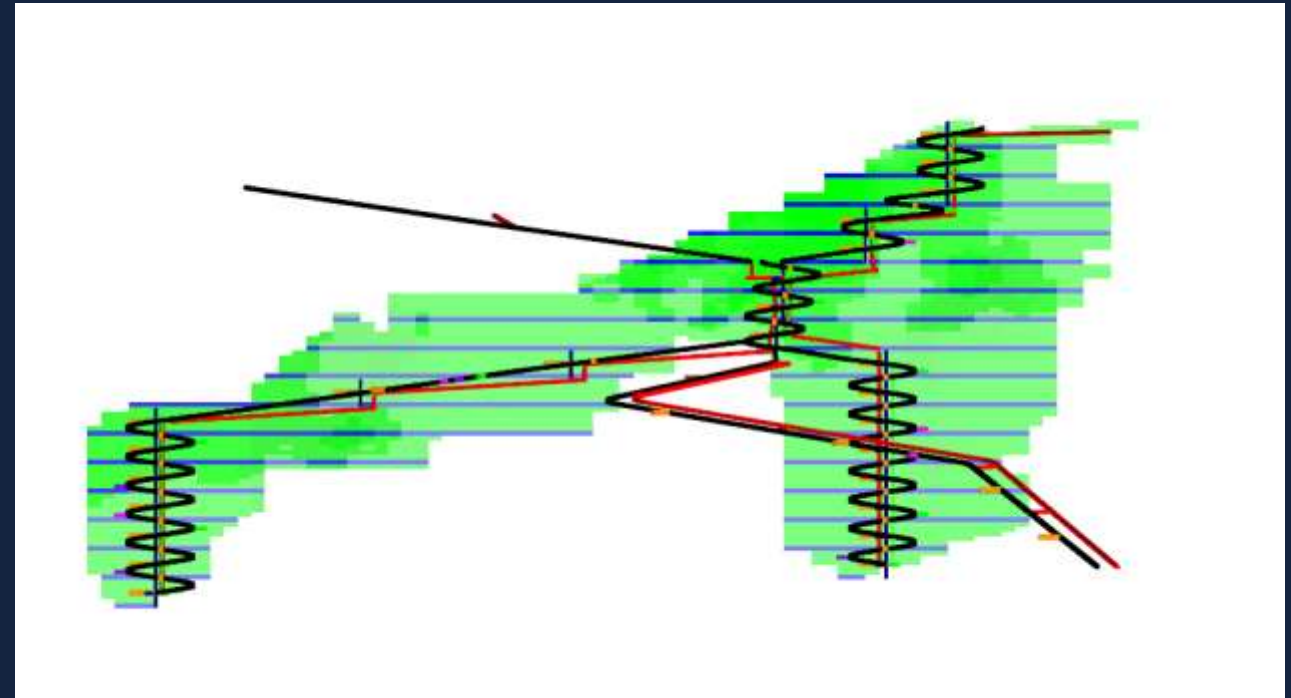


Auld Creek Project

Development Concept Design

RUAGOLD

- Development of project description
- Project definition study (AMC)
- Underground mine
- Target 300,000+ ounces at 6-7 g/t
- Small narrow vein equipment
- 200 people in production
- Mine life 6-8 years
- Key infrastructure (light foot print)
 - Small adit at top of ore body
 - Portal access
 - Processing plant
 - Waste facility
- Additional technical studies underway
 - Metallurgical
 - Project site engineering
 - Geotech & hydrogeology
 - Consent related studies
 - Processing Options study



Auld Creek Project

Mining Equipment and Approach

RUAGOLD

Small narrow vein mining equipment similar to that used at

- Snowy River Mine (NZ)
- New Talisman (NZ)
- Costerfield (Aus)
- Red October (Aus)
- Reward Mine (Aus)



Auld Creek Project

Employment

- Reefton will be our base of operations
- Our Exploration team is growing
- Rua is working with MSD on a program for exploration field staff “MSD Explorers”
- Auld Creek is expected to employ 200 people (in production)
- First roles will support early works – Project Engineer, Admin, Environmental, Logistics.
- Terra Firma Mining is supporting our mining studies and initial underground mining establishment
- Ramp up with a broader range of roles underground operators, process operators, science and professional services along with administration, support and facility management roles



Auld Creek Project

Reefton Operations Water Sampling Overview

RUAGOLD

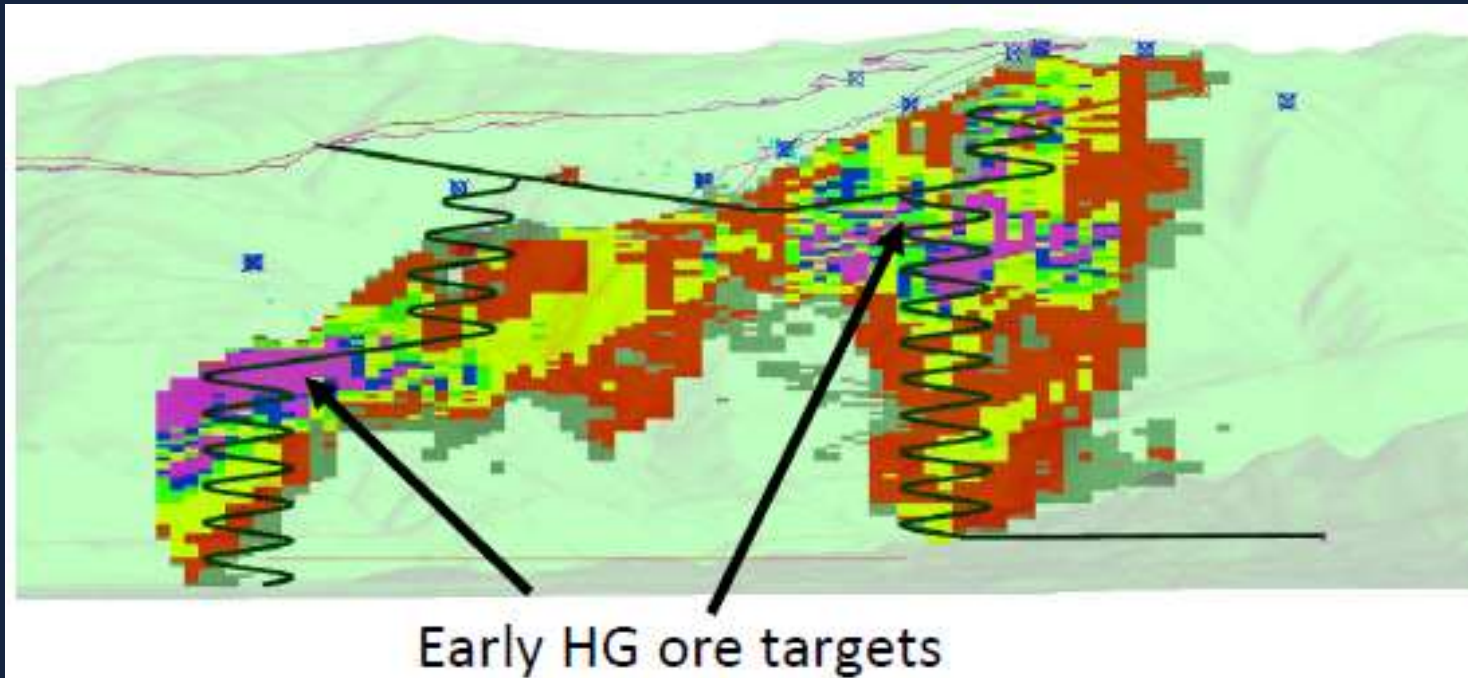
- Base line water sampling program established with support from independent advisors Green Road Group
- Weekly testing in place to build our knowledge
- Results shape our consent and environmental studies
- OceanaGold have been supportive providing access to some data from Globe Progress monitoring programs
- Environmental and water monitoring programs will be developed for operational phase



Auld Creek Project

Preliminary Economic Assessment

RUAGOLD



Global mining consultancy *Mining One* has been engaged to undertake underground mining study with scope covering:

- Advancing the mine concept design to PEA level
- Development of high level mine plan
- Entry, ventilation, surface haul roads and stockpile overview

Mining One will be working on the underground studies closely with New Zealand based *Terra Firma Mining* who will support with local mining context, health and safety and operationalising our early mine plan.

Auld Creek Project

Processing Plant Concept Design

Pitch Black have been engaged to undertake a preliminary economic assessment and to evaluate early-stage metallurgical test work.

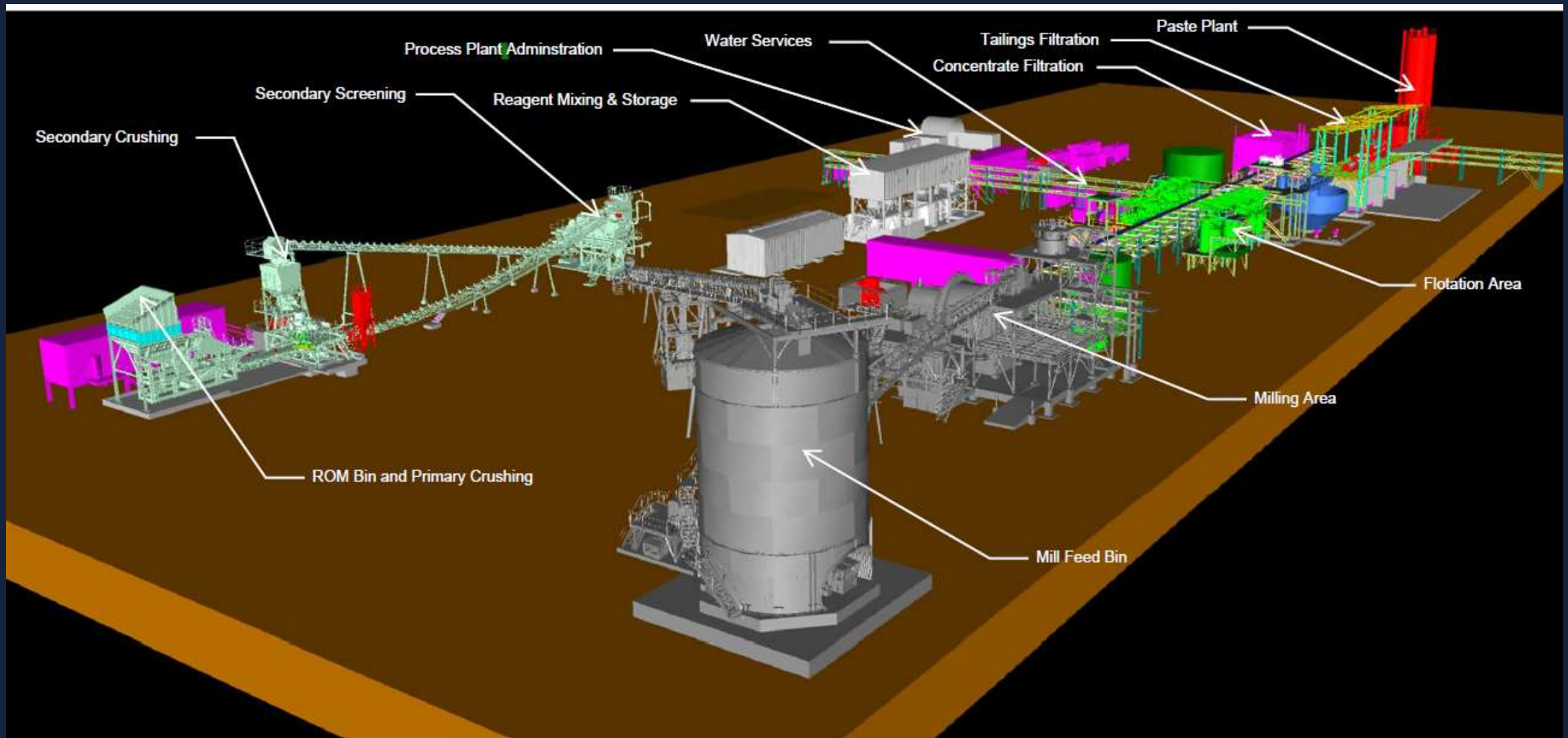
Initial build of a 250,000 tonne per annum plant, with redundancy and flexibility considered in design to facilitate an expansion as mining development expands and exploration potential unfolds.

- three-stage crushing, with fine ore-bin storage and emergency reclaim;
- a single-stage ball mill, with flotation cell treating cyclone overflow, producing an antimony/gold concentrate
- separate gravity circuit to treat ball-mill discharge and flotation tails products to produce gravity gold Doré;
- Gold recovery from the gravity circuit plus flotation concentrate would be in the range of ~90 - 93%,
- Antimony recoveries using lead nitrate as an activator would be in the range of 70-95%,
- concentrate dewatering using a thickener and a filter to produce a transportable concentrate; and
- appropriate tailings-handling facilities (including detoxification of cyanates) depending on plant location and underground paste fill requirements;

Auld Creek Project

Processing Plant Concept Design

RUAGOLD



Economic Contribution 2025

RUAGOLD



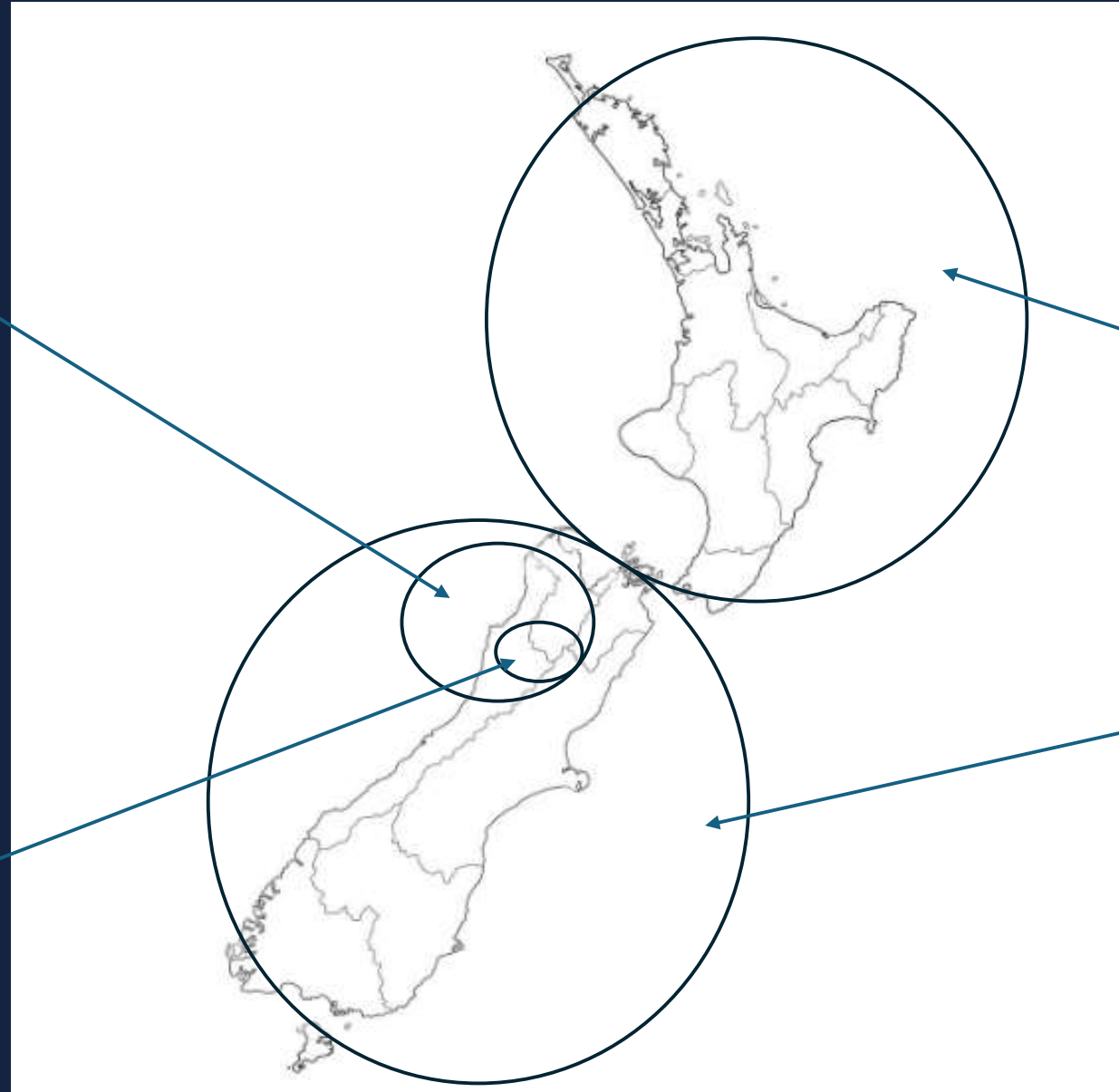
West Coast

47 % of spend
NZ\$ 4,424,937
113 vendors
(Includes Reefton)



Reefton (Buller)

33 % of spend
NZ\$ 3,056,476
79 vendors



New Zealand

NZ\$ 9,399,532
275 vendors

North Island

26 % of spend
NZ\$ 2,473,329
98 vendors

South Island

74 % of spend
NZ\$ 6,926,202
177 vendors

(Note – Includes West Coast and Reefton)

Host Community

Reefton, West Coast

Current understanding of Stakeholder Expectations

- Community support for mine development
- Residential workforce & local leaders
- Community / business sharing benefit of project
- Support for community and legacy projects



Stakeholder Engagement Strategies

In person

- Public community meetings
- Scheduled meetings
- Affected party briefings
- Community event attendance
- Town Office

Digital

- Facebook / Instagram / X
- LinkedIn
- Website

Print

- Regular newsletters
- Notice boards
- Local media

2026 Catalysts

- Q1 2026** – Completion of over-subscribed C\$33M capital raising ✓
 - Graduation from the TSX-V to the TSX ✓
 - Listing on the NZX under ticker RGI ✓
 - Filing of 43:101 Technical Reports for the Reefton and Glamorgan Projects ✓
- Q2 2026** – Anticipated receipt of drill permits for the Glamorgan Project
 - Inclusion by the New Zealand Government for the Reefton Gold-Antimony Project in the Fast-Track permitting process
 - Completion of Preliminary Economic Assessment (“PEA”) for the Reefton Project
- Q3 2026** – Completion of 19,000-meter Drill Program on the Reefton Project and 5,000-meter drill program on the Glamorgan Project
- Q4 2026** – Submission of a mining permit application for the Reefton Project under the Fast-Track permitting process
 - Completion of Prefeasibility Study (“PFS”) for the Reefton Project

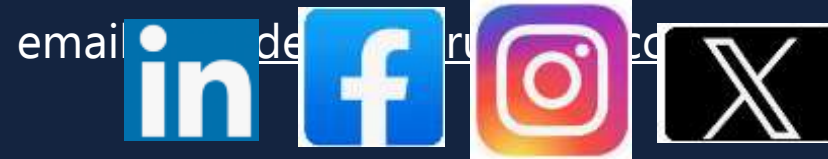
RUAGOLD

NZX: **RGI**
TSX: **RUA**
OTC: **NZAU**
WKN: **A40QYC**

Simon Delander
Houghton
Vice President
Project Coordinator
email: sdelander@ruagold.com
lhoughton@ruagold.com

Simon Henderson
COO and Director

Leanne
Consent



info@ruagold.com

www.ruagold.com

