

RUAGOLD



An Emerging Gold Explorer with Two Highly Prospective Land Packages in **NEW ZEALAND's** historical gold fields.

TSX-V: **RUA** • OTC: **NZAU**F • WKN: **A4010V**

www.ruagold.com

CAUTIONARY STATEMENT

CAUTIONARY STATEMENT

This presentation may contain forward-looking statements that are not historical facts. Forward Looking Information includes, but is not limited to, disclosure regarding possible events, conditions or financial performance that is based on assumptions about future economic conditions and courses of action; the timing and costs of future exploration activities on RUA GOLD ("RUA") properties; success of exploration activities; permitting timelines and requirements; requirements for additional capital; environmental requirements; planned exploration and development of properties and the results thereof; planned expenditures and budgets and the execution thereof. Often, but not always, forward-looking statements can be identified by the use of words such as "expects," "plans," "estimates," "intends," "believes," "could," "might," "will", "budget", "scheduled", "forecasts", "anticipates", "potential", "base case" or variations of such words and phrases or statements that certain actions, events or results "may", "could", "would", "might" or "will be taken", "occur" or "be achieved". Forward-looking statements involve known and unknown risks, uncertainties, and other factors which may cause the actual results, performance, or achievements of RUA to be materially different from any future results, performance, or achievements expressed or implied by the forward-looking statements. Forward looking statements or information relates to, among other things, RUA's corporate strategies, mineral resource estimates and plans for further exploration, which will require additional funding. These forward-looking statements are based on management's current expectations and beliefs (including the belief in the accuracy of the resource estimate) but given the uncertainties, assumptions and risks, readers are cautioned not to place undue reliance on such forward-looking statements or information. Information in this presentation is not intended to be a comprehensive review of all matters and developments concerning RUA and RUA GOLD does not assume any obligation to update, or to publicly announce, any such statements, events or developments, except as required by law.

For additional information on risks and uncertainties, see RUA's most recently filed annual management discussion & analysis ("MD&A"), which is available on SEDAR at www.sedar.com and on RUA's website at www.ruagold.com. The risk factors identified in the MD&A are not intended to represent a complete list of factors that could affect RUA GOLD.

COMPLIANCE WITH NI 43-101

The technical information in this presentation (the "Technical Information") has been approved by Simon Henderson, COO and Director for RUA GOLD and a Qualified Person under NI43-101 definitions. For readers to understand the information in this presentation, they should read the technical report (available www.sedar.com) in its entirety (the "Technical Report"), including all qualifications, assumptions and exclusions that relate to the information set out in this presentation that qualifies the Technical Information. The Technical Report is intended to be read as a whole, and sections or summaries should not be read or relied upon out of context. The Technical Information in the Technical Report is subject to the assumptions and qualifications contained therein.

Some of the mineral resources at the RUA GOLD Properties are categorized as indicated and some as inferred mineral resources. Mineral resources that are not mineral reserves do not have demonstrated economic viability. Mineral resource estimates do not account for mineability, selectivity, mining loss and dilution. These mineral resource estimates include inferred mineral resources that are normally considered too speculative geologically to have economic considerations applied to them that would enable them to be categorized as mineral reserves. There is also no certainty that these inferred mineral resources will be converted to measured and indicated categories through further drilling, or into mineral reserves, once economic considerations are applied.

Focus, Location and Timing

RUAGOLD

STRATEGY

- Targeting under-developed high-grade gold
- New Zealand District Roll Up
- Pro-Mining Government

RUA GOLD's projects represent a compelling investment opportunity, underpinned by strategic timing, significant geological potential, and RUA GOLD's proven leadership team.



Economic

Gold is an increasingly attractive asset for global investors seeking value storage, stability and has seen continuous all-time highs.



Timing

New Zealand's new Fast-Track Approvals bill streamlines process for mining operations and expedites exploration and extraction.



Expertise

Management brings a history of value creation, supported by a committed board and leadership with deep New Zealand technical expertise.

New Zealand is **Open for Business**

A Rich History of **High Grade Gold** in an Emerging Jurisdiction



**Highly Prospective
Geology**

40M+ oz. Au

NZ's rich production
history



Active Mining Industry

Fast Track

NZ Government
new fast-track approvals
bill to expedite mining
approvals and permits.



Pro-Mining Government

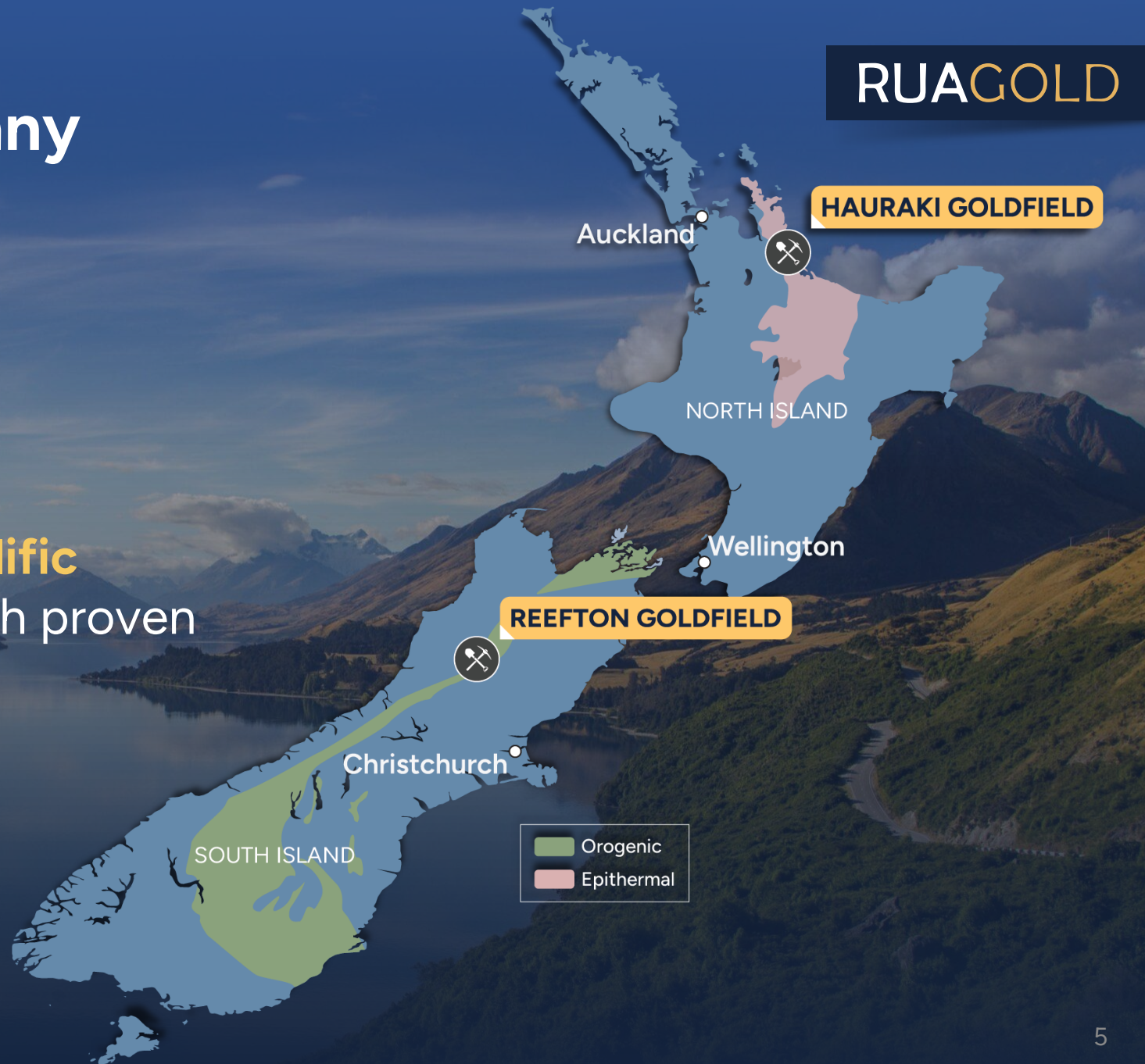
2x Exports

Pro-mining Gov't
10 year goal to double
mining exports.

Dominant New Zealand Gold Exploration Company



Strategically focused on **two prolific gold districts** in New Zealand with proven high-grade gold deposits.



Exploration in **Two** Historic **High Grade** Gold Districts

RUAGOLD

HAURAKI GOLDFIELD:
High-grade Epithermal Gold

HISTORIC PRODUCTION

15M oz. Au
60M oz. Ag

HISTORIC GRADE

15-30 g/t Au

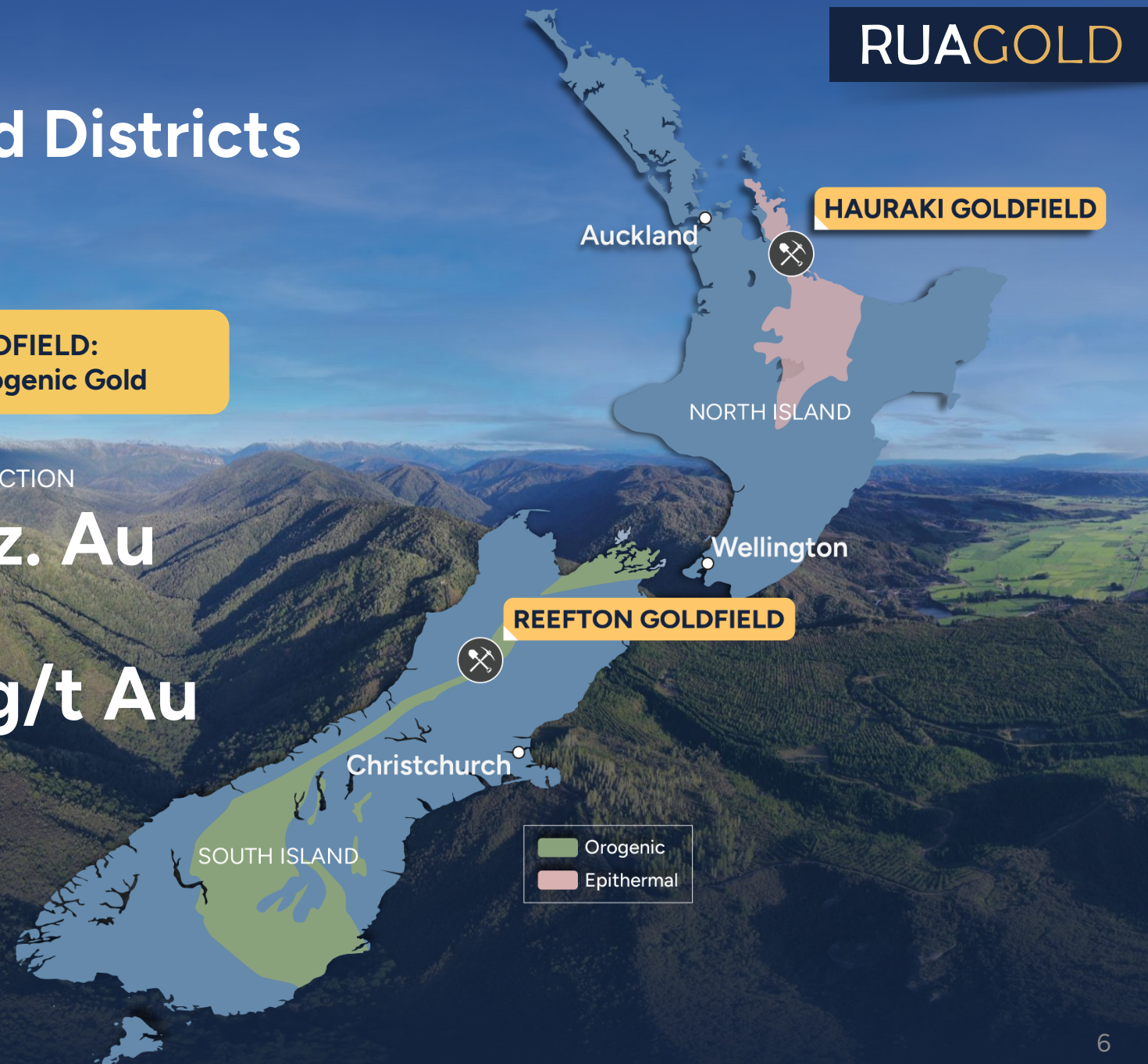
REEFTON GOLDFIELD:
High-grade Orogenic Gold

HISTORIC PRODUCTION

12M oz. Au

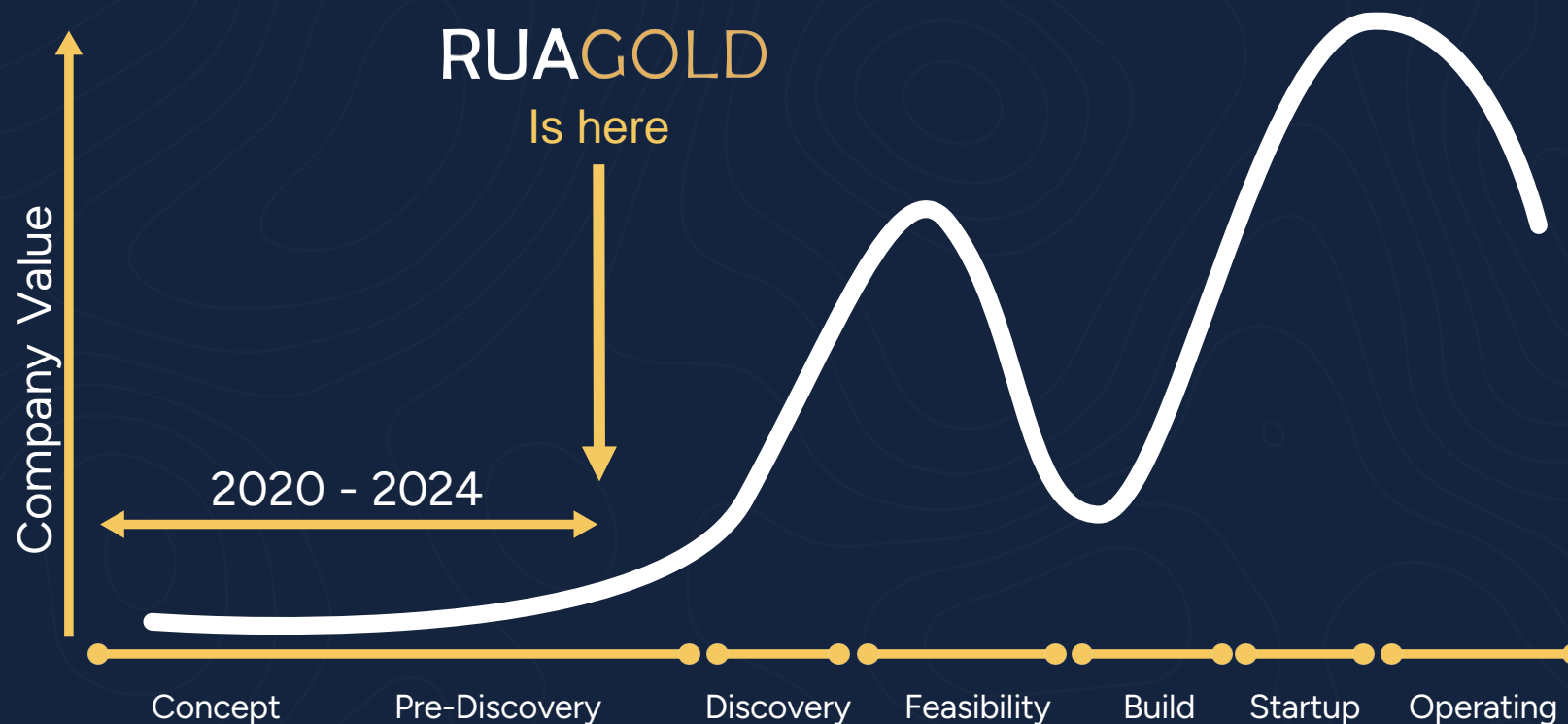
HISTORIC GRADE

9-50 g/t Au



The Right Time To Invest is **NOW**

The best time to invest in an exploration company is right before **discovery**, when all the ground work has been laid, and drills are turning.



REEFTON GOLDFIELD

Geology, History, and Potential.

RUAGOLD

GEOLOGY

Orogenic gold deposits are among the highest gold-grade deposits in the world

HISTORY

The Reefton Goldfield has produced 2 Moz gold at 9-50 g/t Au

POTENTIAL

Discovered high-grade Pactolus vein; drilling shows significant intercepts.



Reefton Goldfield: District Scale Land Package

PROVEN PROGRESS

5000+
meters of drilling

SCALE

95%
of Reefton tenements

HISTORIC GOLD

~1Moz @ 25g/t
of past production

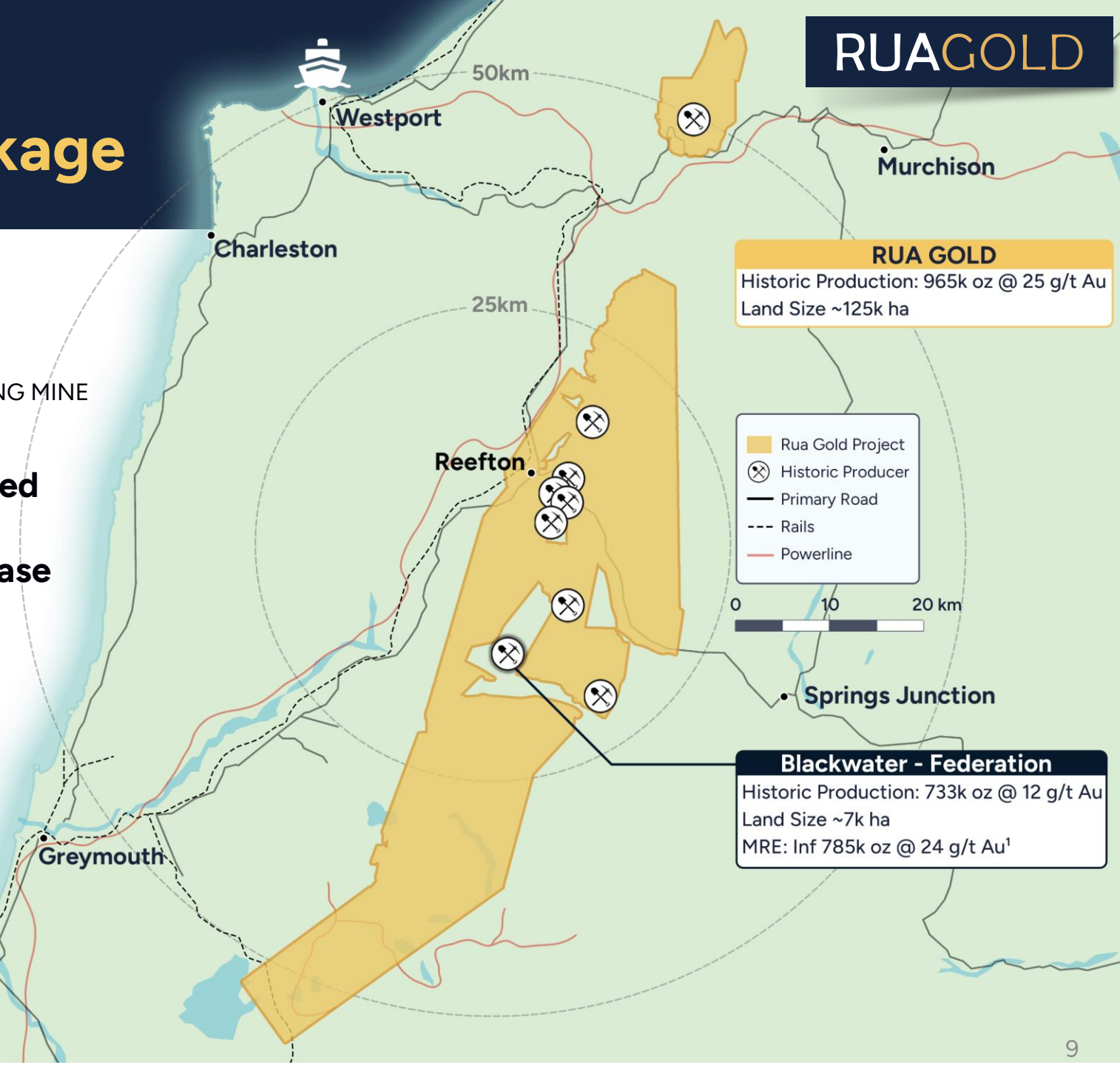
ACTIVE NEIGHBOURING MINE

Federation Mining
+US\$150M raised

US\$30M purchase
from OceanaGold

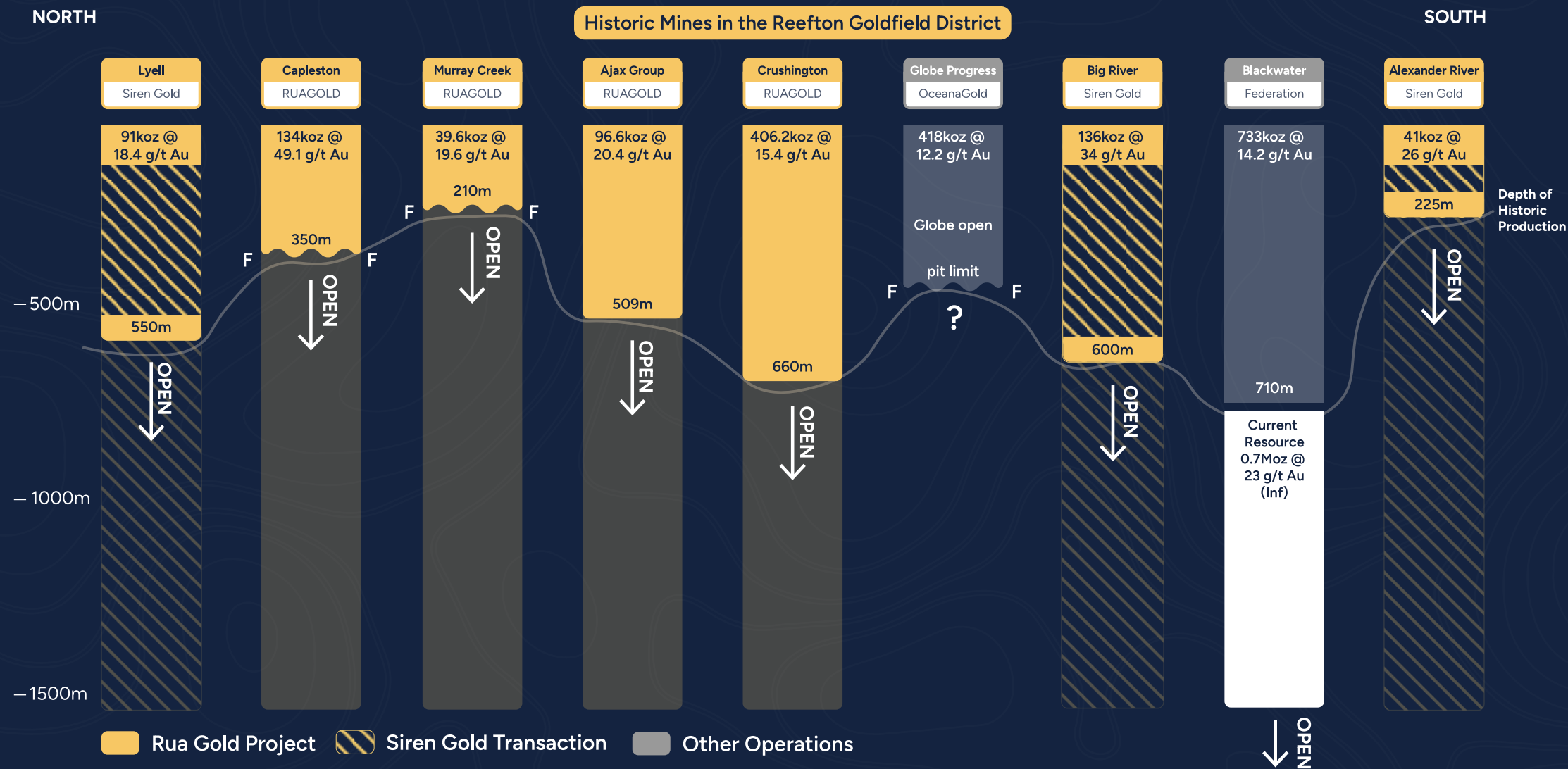
+700k oz.
inferred resource
Permitted and under
construction

TASMAN SEA



Actively Advancing a District-Scale Discovery

RUAGOLD

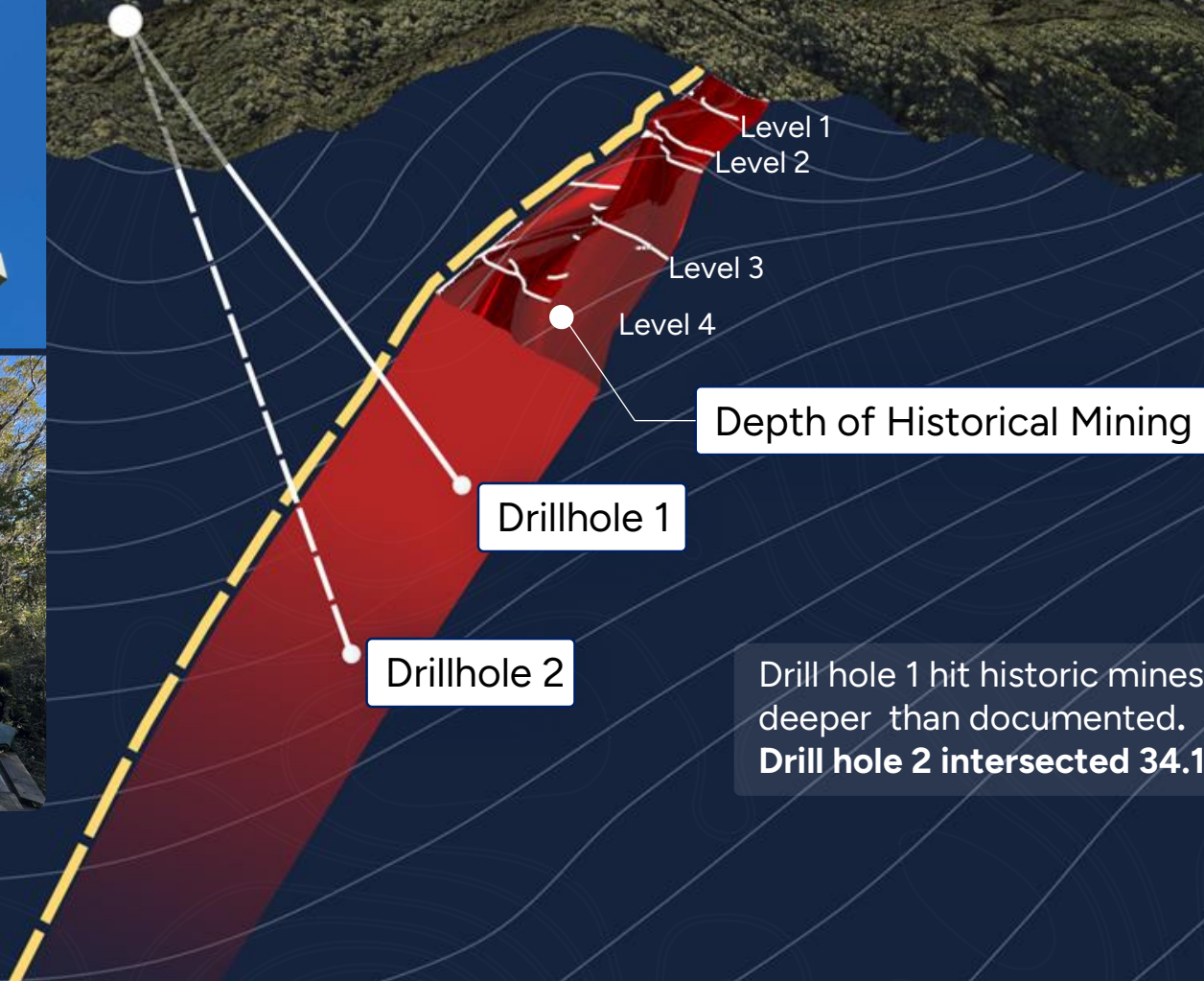


✓ Development of the Blackwater Mine (Snowy River Project) demonstrates continuity of **gold mineralization to 1,500m** and potentially beyond

✓ Blackwater provides a blueprint for the RUA combined land package to have the **value of 7x "Blackwaters"**

Near Mine Drilling Program: **Murray Creek**

RUAGOLD



Depth of Historical Mining

Drillhole 1

Drillhole 2

Drill hole 1 hit historic mines that went deeper than documented.
Drill hole 2 intersected 34.1 g/t over 0.2m.

Reefton Goldfield

A forgotten historic gold mining district.

Now **RUA GOLD** is back as the dominant player

RUAGOLD



Historical Production of over
2Moz @ 9-50g/t Au



2024
RUA GOLD Is Bringing Reefton Back

HAURAKI GOLDFIELD

A Cornerstone of New Zealand Gold Mining

GEOLOGY

Epithermal gold deposits are among the **highest gold grade** producers in the world

HISTORY

The Hauraki Goldfield has produced **15M+ oz gold** and **60M+ oz silver**

PRODUCTION

Neighboring mines are already producing significant amounts of **high grade gold**



Hauraki Goldfields

RUAGOLD

Glamorgan

2.8km

OceanaGold-Wharekirauponga

1.0Moz @ 15.9g/t Au (Ind) 0.4Moz @ 9g/t Au (Inf)¹
With potential for >10Moz

OceanaGold-Waihi Operation

~10Moz gold produced to date

Northern Rock Stack

Gladstone Pit

Tailings Storage Facility

¹Source: OceanaGold R & R Annual Statement, February 21, 2024

Hauraki Goldfield

RUA GOLD's recent acquisition -
Glamorgan

HAURAKI'S HIGH-GRADE EPITHERMAL GOLDFIELD

- ~50 Epithermal gold – silver deposits
- Mined from 1860's
- >15Moz gold and >60Moz silver produced

RUA GOLD RECENT ACQUISITION

- Untested 3.8km long zone of silicification, veining and alteration
- > 50ppb gold in soils over its 3.8km length
- Highlight 95g/t Au in rock samples
- No drilling into this target

Epithermal Goldfield

- Large Gold Deposit
- Gold Deposit

• Auckland

• Pauanui

GLAMORGAN *Rua Gold*

4644 ha of land in highly prospective region

• Whangamatā

Just 2.8 kms from WKP

Oceana Gold **Wharekairauponga**

1.0Moz @ 15.9g/t Au (Ind)
0.4Moz @ 9g/t Au (Inf)¹
with potential for >10Moz

Waihi (Martha) *Oceana Gold*

~10Moz gold produced to date

¹Source: OceanaGold R & R Annual Statement, February 21, 2024

Glamorgan:

Classic Features of Major Epithermal Au/Ag System

RUAGOLD

3.8KM

Untested zone of
silicification, veining and
alteration

Up to

95 g/t Au

Rock samples on surface

Gold in soils over 3.8km length

>50ppb

ACTIVE NEIGHBOURING MINE

Wharekirauponga (WKP)

2.8KM

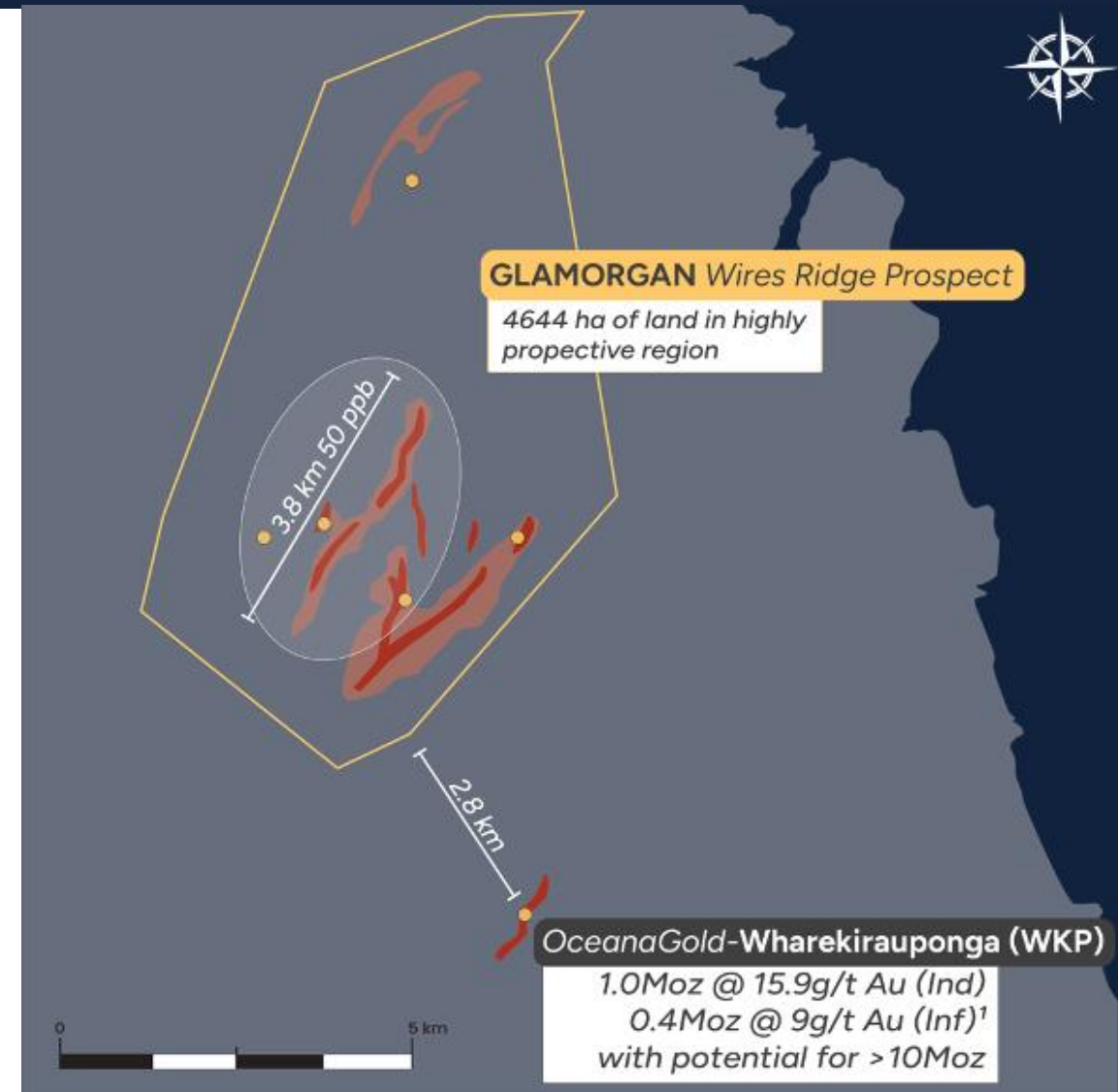
from Glamorgan

1.0Moz @ 15.9 g/t Au(Ind)

0.4Moz @ 9g/t Au (inf)¹

With potential for >10Moz

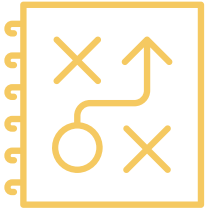
Included in the Fast Track
Approval Process



¹Source: OceanaGold R & R Annual Statement, February 21, 2024

The Team: A Legacy of Creating Value

RUA**GOLD**



RUA GOLD's team is driving an **aggressive and focused strategy** to capitalize on New Zealand's gold mining potential, recognizing the unparalleled opportunities in their projects.

RUA GOLD's team has the experience to extract New Zealand's high-grade gold, having achieved:



In Exits

\$11B+



Mines Into Production

8 Mines



In Capital Raised

\$2.2B+



Experience in
Gold Mining Projects

150+ Years

Board of Directors



Chairman

Oliver Lennox-King

Former Chairman of Fronteer Gold and Roxgold. Largest shareholder of RUA GOLD.



Director

Paul Criddle

Formerly COO West Africa at Fortuna and previously COO of Roxgold. Built and managed gold mines in West Africa. Former Managing Director at Matador Mining.



Director

Mario Vetro

Co-founder K92 Mining, Owner in Commodity Partners. Extensive experience in structuring and advising resource companies.



Director

Tyron Breytenbach

Geologist with experience in operations and capital markets. CEO of Lithium Africa Resources, formerly SVP Capital Markets at Aris Mining and Managing Director of Cormark Securities.

Key Management



CEO

Robert Eckford

Co-founder and Head of Finance and of Aris Mining. Experience in mining across Australia, Africa and South America.



COO

Simon Henderson

Exploration Geologist and specialist in orogenic and epithermal gold systems. Has a long history and strong relationships in New Zealand's with stakeholders.



CFO & Corporate Secretary

Zeenat Lokhandwala

Former CFO of Great Bear Royalties and Director of Finance of Great Bear Resources with over 10 years of M&A, finance, accounting and taxation experience.



Brian Rodan (Incoming Director)

43+ years of experience; currently serving as Fellow of the Australian Institute of Mining and Metallurgy
Founder and Chairman of Siren Gold

Capital Structure

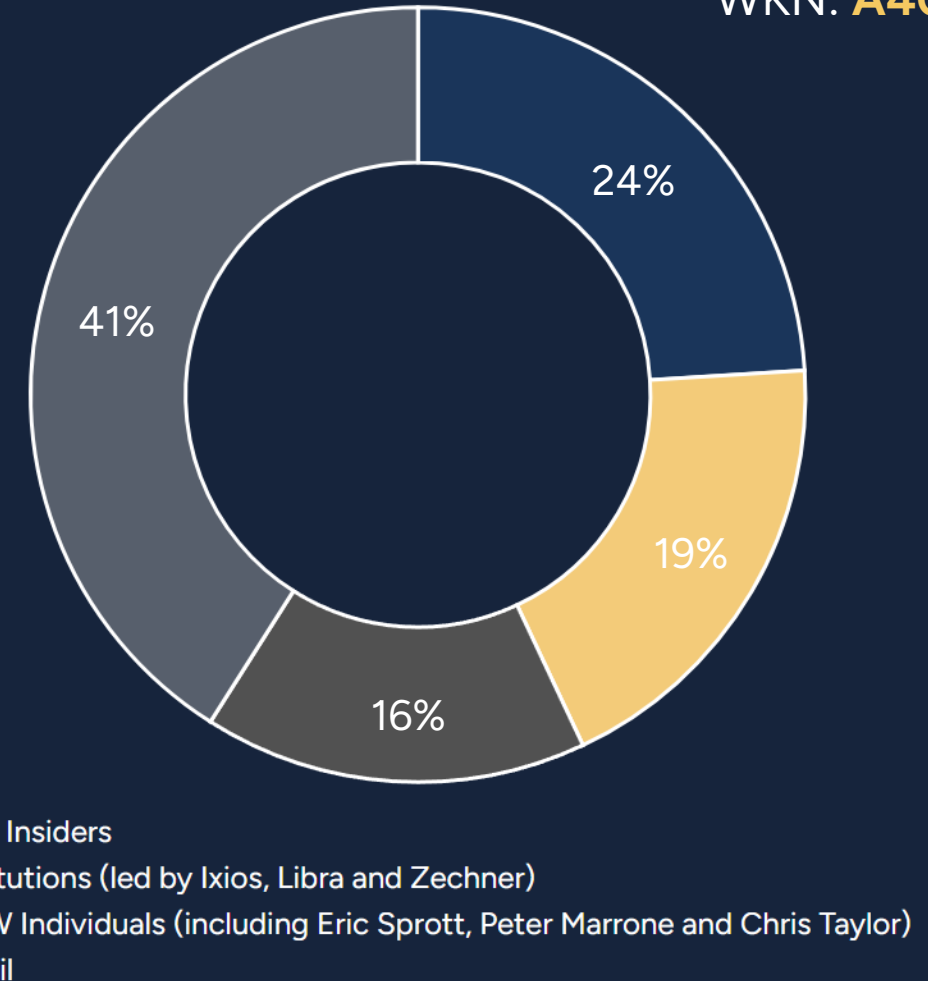
RUAGOLD

TSX-V: **RUA**

OTC: **NZAUF**

WKN: **A4010V**

	<i>Current</i>	<i>Pro Forma¹</i>
Common Shares	238.0M	322.0M
Options 10M @ \$0.10 vesting in 2027 2.5M @ \$0.17 - \$0.25 vesting in 2027	12.5M	12.5M
Warrants 16M @ \$0.20 expiring March 2025 2.7M @ \$0.18 broker warrants July 2026	18.7M	18.7M
Fully Diluted	269.2M	353.2M
Market Capitalization Undiluted using share price of 0.20	C\$47.6	C\$64.4
Net cash <i>At June 30, 2024 (unaudited)</i>	C\$3.4M	C\$9.4M



1. Pro forma ownership contemplates the closing of the Transaction with Siren Gold covered in slide 9 and also includes the \$8M raised on the placement closed July 25, 2024

Purpose Driven Strategy

RUAGOLD

WE KNOW NEW ZEALAND:

Majority of our board and management have experience in New Zealand

WE KNOW GOLD:

\$11B+ in exits, **55+** years of experience in gold mining

WE KNOW HOW TO FIND AND MINE GOLD:

8 mines taken to production by team members

NEW ZEALAND IS READY:

Pro-mining NZ Government **fast tracking approvals** for mining companies

THE MARKET IS READY

Gold Prices hitting **all time high**

THE TIME IS RIGHT FOR RUA GOLD

RUA GOLD

TSX-V: **RUA**
OTC: **NZAU**
WKN: **A4010V**

Robert Eckford

CEO

1055 West Georgia Street, Suite 1500

Vancouver BC, V6E 4N7, Canada

email: reckford@ruagold.com

www.ruagold.com

