



# RUAGOLD

An Emerging Gold Explorer with Two Highly Prospective Land Packages in **NEW ZEALAND's** Historical Goldfields

TSX-V: **RUA** • OTC: **NZAU** • WKN: **A4010V**

[www.ruagold.com](http://www.ruagold.com)

# CAUTIONARY STATEMENT

## CAUTIONARY STATEMENT

This presentation may contain forward-looking statements that are not historical facts. Forward Looking Information includes, but is not limited to, disclosure regarding possible events, conditions or financial performance that is based on assumptions about future economic conditions and courses of action; the timing and costs of future exploration activities on RUA GOLD ("RUA") properties; success of exploration activities; permitting timelines and requirements; requirements for additional capital; environmental requirements; planned exploration and development of properties and the results thereof; planned expenditures and budgets and the execution thereof. Often, but not always, forward-looking statements can be identified by the use of words such as "expects," "plans," "estimates," "intends," "believes," "could," "might," "will", "budget", "scheduled", "forecasts", "anticipates", "potential", "base case" or variations of such words and phrases or statements that certain actions, events or results "may", "could", "would", "might" or "will be taken", "occur" or "be achieved". Forward-looking statements involve known and unknown risks, uncertainties, and other factors which may cause the actual results, performance, or achievements of RUA to be materially different from any future results, performance, or achievements expressed or implied by the forward-looking statements. Forward looking statements or information relates to, among other things, RUA's corporate strategies, mineral resource estimates and plans for further exploration, which will require additional funding. These forward-looking statements are based on management's current expectations and beliefs (including the belief in the accuracy of the resource estimate) but given the uncertainties, assumptions and risks, readers are cautioned not to place undue reliance on such forward-looking statements or information. Information in this presentation is not intended to be a comprehensive review of all matters and developments concerning RUA and RUA GOLD does not assume any obligation to update, or to publicly announce, any such statements, events or developments, except as required by law.

For additional information on risks and uncertainties, see RUA's most recently filed annual management discussion & analysis ("MD&A"), which is available on SEDAR at [www.sedar.com](http://www.sedar.com) and on RUA's website at [www.ruagold.com](http://www.ruagold.com). The risk factors identified in the MD&A are not intended to represent a complete list of factors that could affect RUA GOLD.

## COMPLIANCE WITH NI 43-101

The technical information in this presentation (the "Technical Information") has been approved by Simon Henderson, COO and Director for RUA GOLD and a Qualified Person under NI43-101 definitions. For readers to understand the information in this presentation, they should read the technical report (available [www.sedar.com](http://www.sedar.com)) in its entirety (the "Technical Report"), including all qualifications, assumptions and exclusions that relate to the information set out in this presentation that qualifies the Technical Information. The Technical Report is intended to be read as a whole, and sections or summaries should not be read or relied upon out of context. The Technical Information in the Technical Report is subject to the assumptions and qualifications contained therein.

Some of the mineral resources at the RUA GOLD Properties are categorized as indicated and some as inferred mineral resources. Mineral resources that are not mineral reserves do not have demonstrated economic viability. Mineral resource estimates do not account for mineability, selectivity, mining loss and dilution. These mineral resource estimates include inferred mineral resources that are normally considered too speculative geologically to have economic considerations applied to them that would enable them to be categorized as mineral reserves. There is also no certainty that these inferred mineral resources will be converted to measured and indicated categories through further drilling, or into mineral reserves, once economic considerations are applied.

## STRATEGY

- Targeting under-developed high-grade gold
- New Zealand District Roll Up
- Pro-Mining Government

RUA GOLD's projects represent a compelling investment opportunity, underpinned by strategic timing, significant geological potential, and RUA GOLD's proven leadership team.



### Economic

Gold is an increasingly attractive asset for global investors seeking value storage, stability and has seen continuous all-time highs.



### Timing

New Zealand's new Fast-Track Approvals bill streamlines process for mining operations and expedites exploration and extraction.



### Expertise

Management brings a history of value creation, supported by a committed board and leadership with deep New Zealand technical expertise.

# New Zealand is **Open for Business**

A Rich History of **High-Grade Gold** in an Emerging Jurisdiction

RUAGOLD



Highly Prospective Geology

## 40M+ oz. Au

NZ's rich production history



Active Mining Industry

## Fast Track

NZ Government's new fast-track approvals bill to expedite mining approvals and permits.



Pro-Mining Government

## 2x Exports

Pro-mining Government's 10-year goal to double mining exports.

# Dominant New Zealand Gold Exploration Company

RUAGOLD



Strategically focused on **two prolific gold districts** in New Zealand with proven high-grade gold deposits.



# Exploration in **Two** Historic **High-Grade** Gold Districts

**RUAGOLD**

**HAURAKI GOLDFIELD:**  
High-grade Epithermal Gold

HISTORIC PRODUCTION

**15M oz. Au**  
**60M oz. Ag**

HISTORIC GRADE

**15-30 g/t Au**

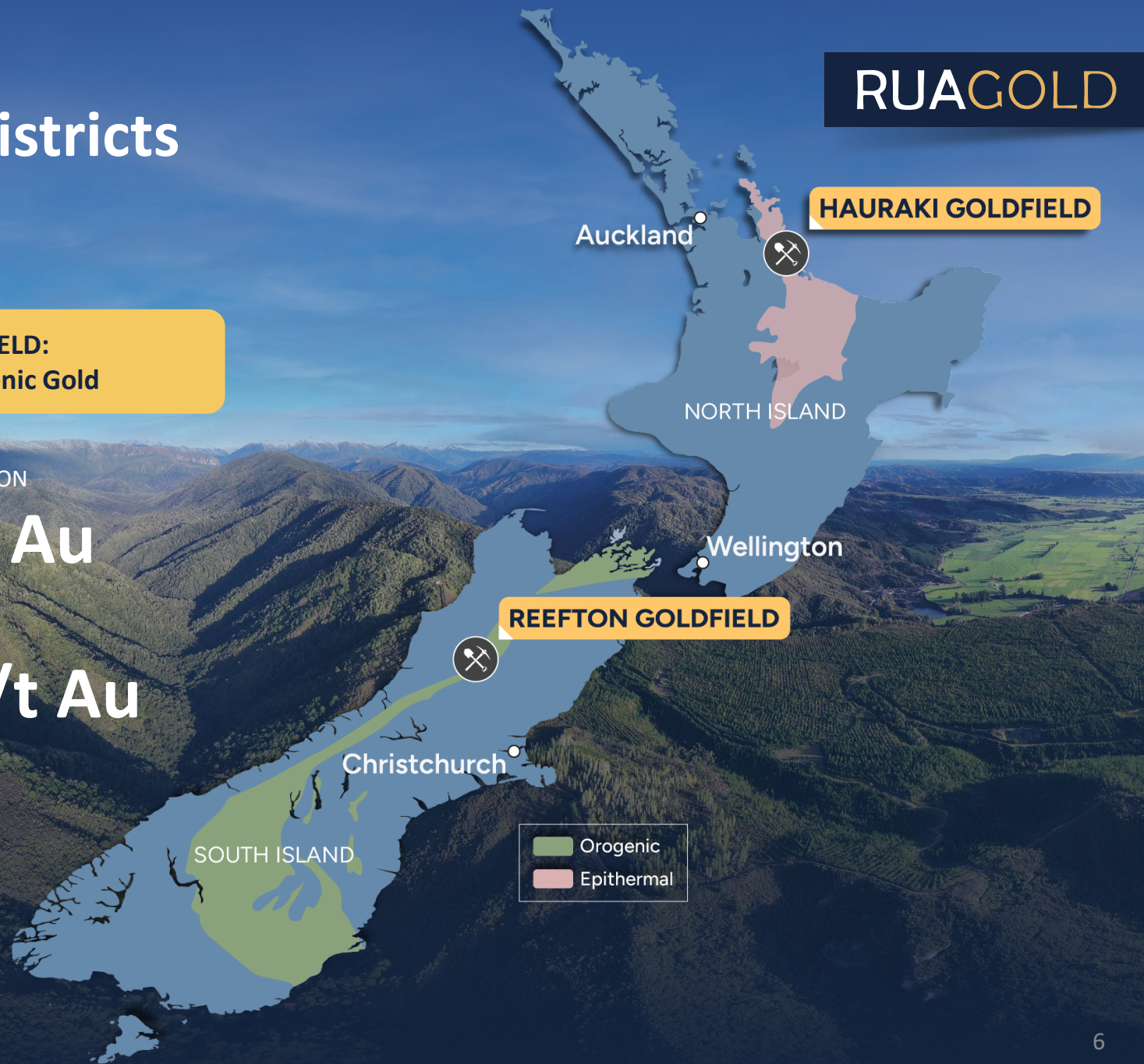
**REEFTON GOLDFIELD:**  
High-grade Orogenic Gold

HISTORIC PRODUCTION

**2M oz. Au**

HISTORIC GRADE

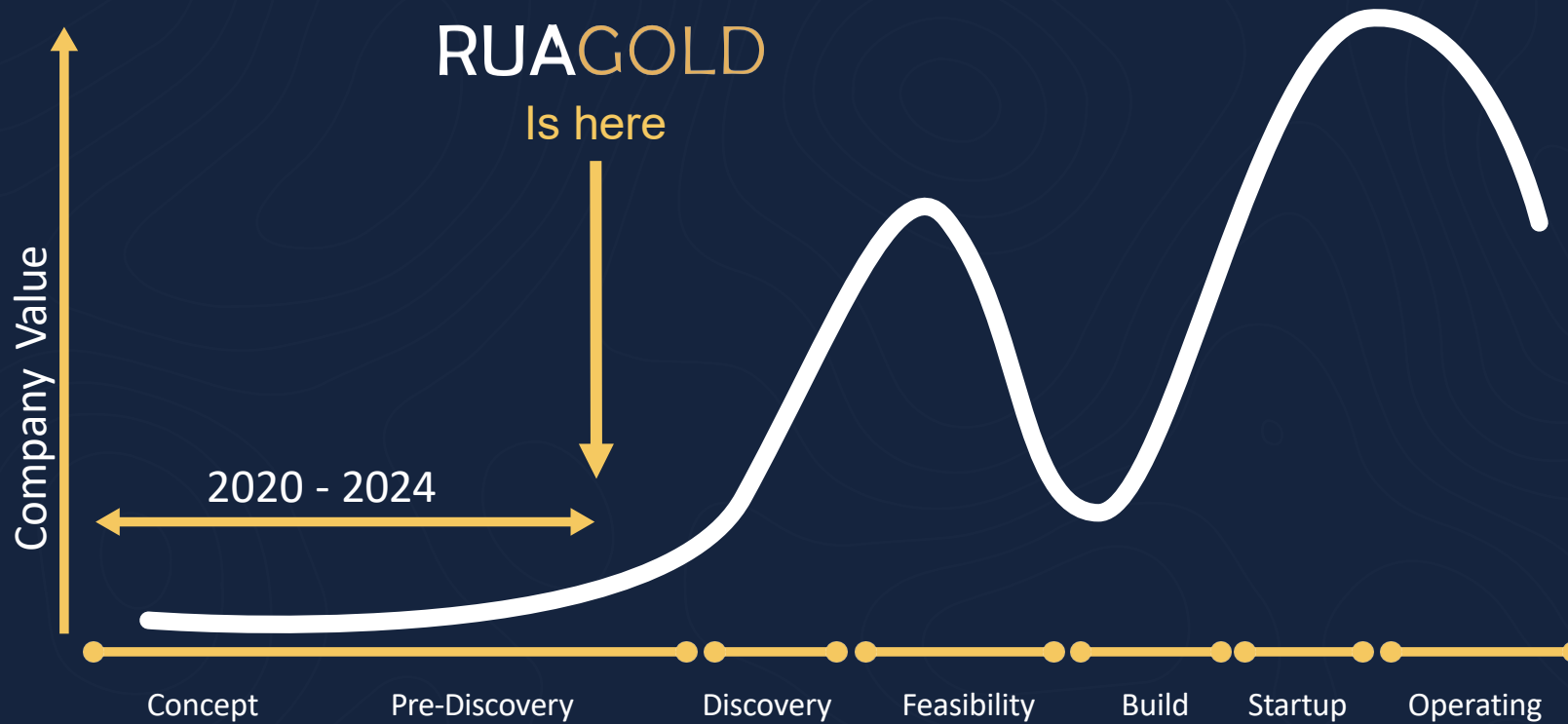
**9-50 g/t Au**



# The Right Time To Invest is **NOW**

RUAGOLD

The best time to invest in an exploration company is right before **discovery**, when all the groundwork has been laid, and drills are turning.



# REEFTON GOLDFIELD

## Geology, History, and Potential

RUAGOLD

### GEOLOGY

Orogenic gold deposits are among the **highest gold grade** deposits in the world

### HISTORY

The Reefton Goldfield has produced **2 Moz gold** at **9-50 g/t Au**

### POTENTIAL

A land package that had **high-grade production** and is underexplored at depth





# REEFTON GOLDFIELD

## District Scale Land Package

RUAGOLD

AGGRESSIVE DRILL PROGRAM

**3 drill rigs**  
currently operating

SCALE

**95%**  
of Reefton tenements

HISTORIC GOLD

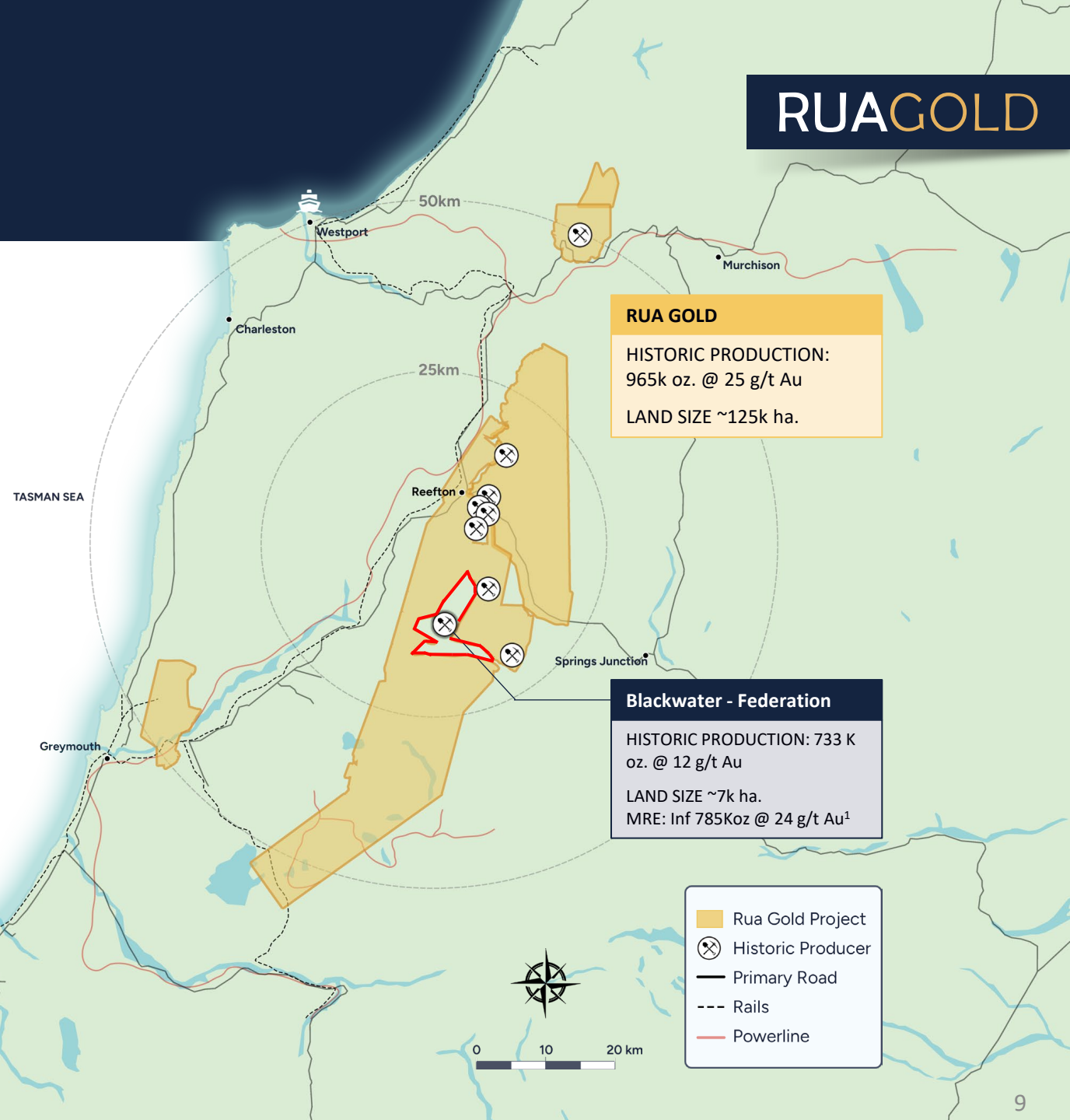
**~1Moz @ 25g/t**  
of past production

ACTIVE NEIGHBOURING MINE

Federation Mining  
**+US\$150M raised**

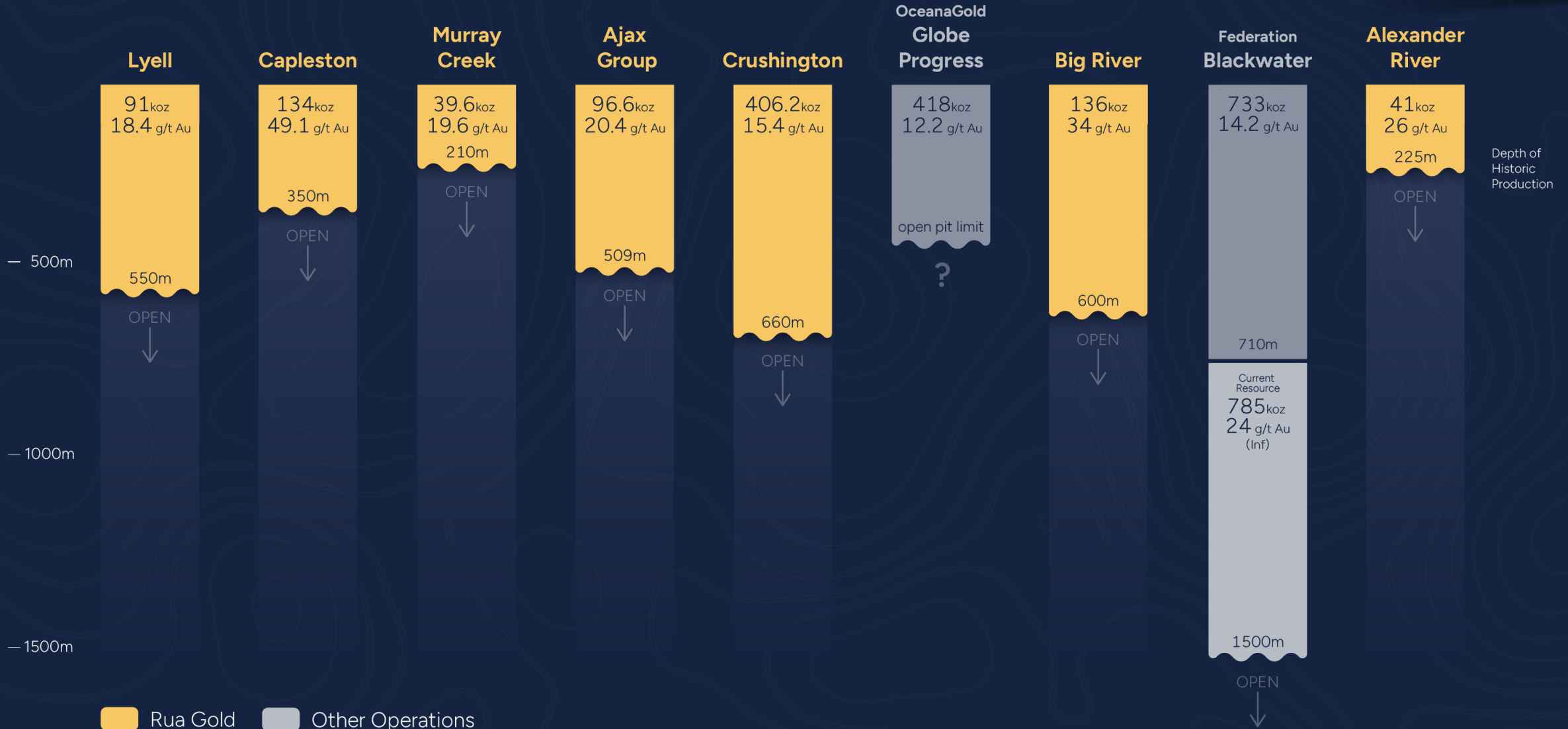
**US\$30M purchase**  
from OceanaGold

**+785k oz.**  
Inferred resource<sup>1</sup>  
Permitted and under  
construction



1. Source: <https://federationmining.com.au/wp-content/uploads/2024/10/Investor-Deck-Federation-OCT-2024.pdf>

# Historic Production of the Reefton Goldfield

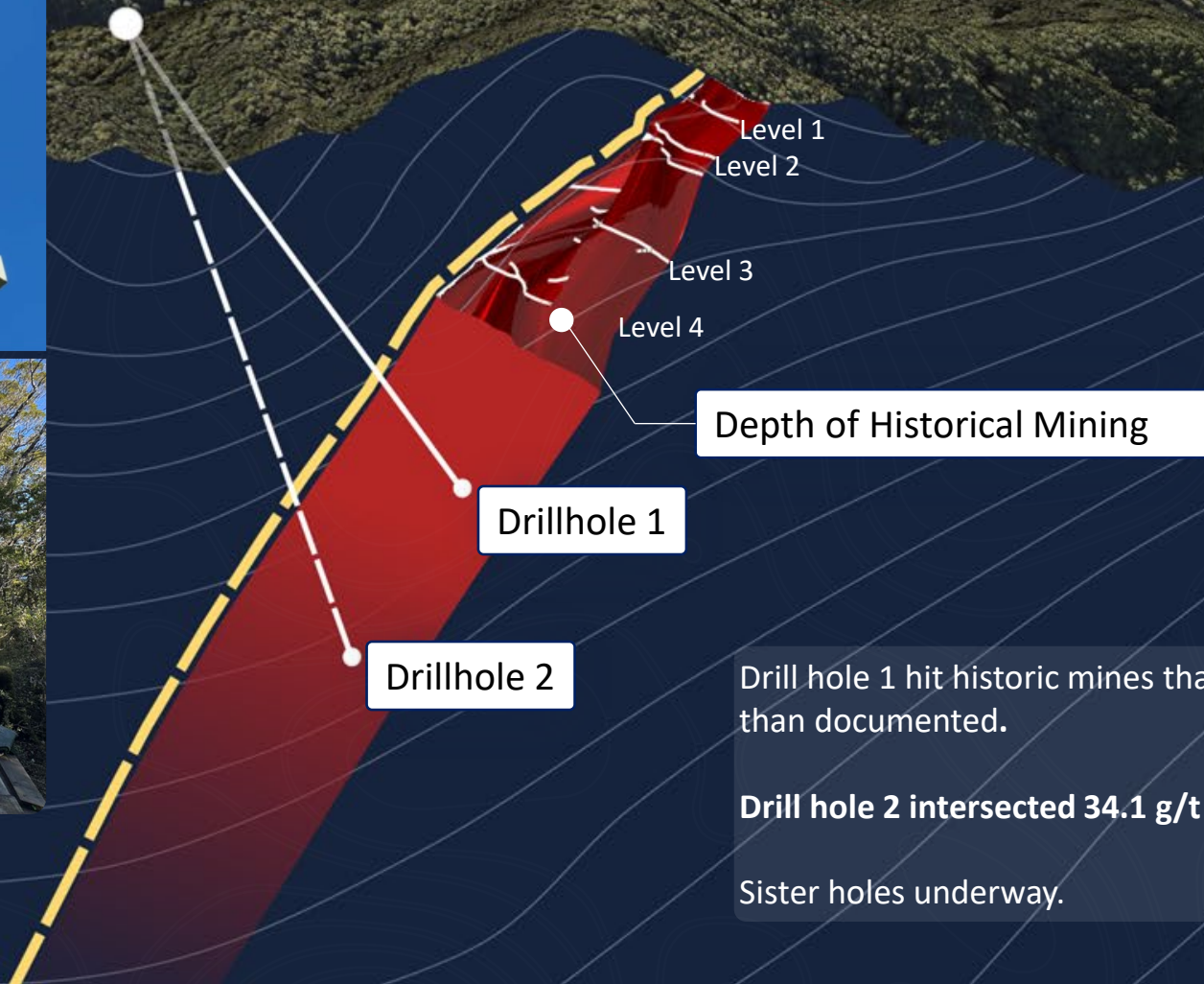


✓ Development of the Blackwater Mine (Snowy River Project) demonstrates continuity of **gold mineralization to 1,500m** and potentially beyond

✓ Blackwater provides a blueprint for the RUA combined land package to have the **value of 7x "Blackwaters"**

# Near Mine Drilling Program: Murray Creek

RUAGOLD



Drill hole 1 hit historic mines that went deeper than documented.

Drill hole 2 intersected 34.1 g/t over 0.2m.

Sister holes underway.

# Near Mine Drilling Program: Capleston

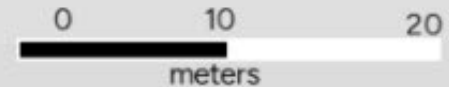
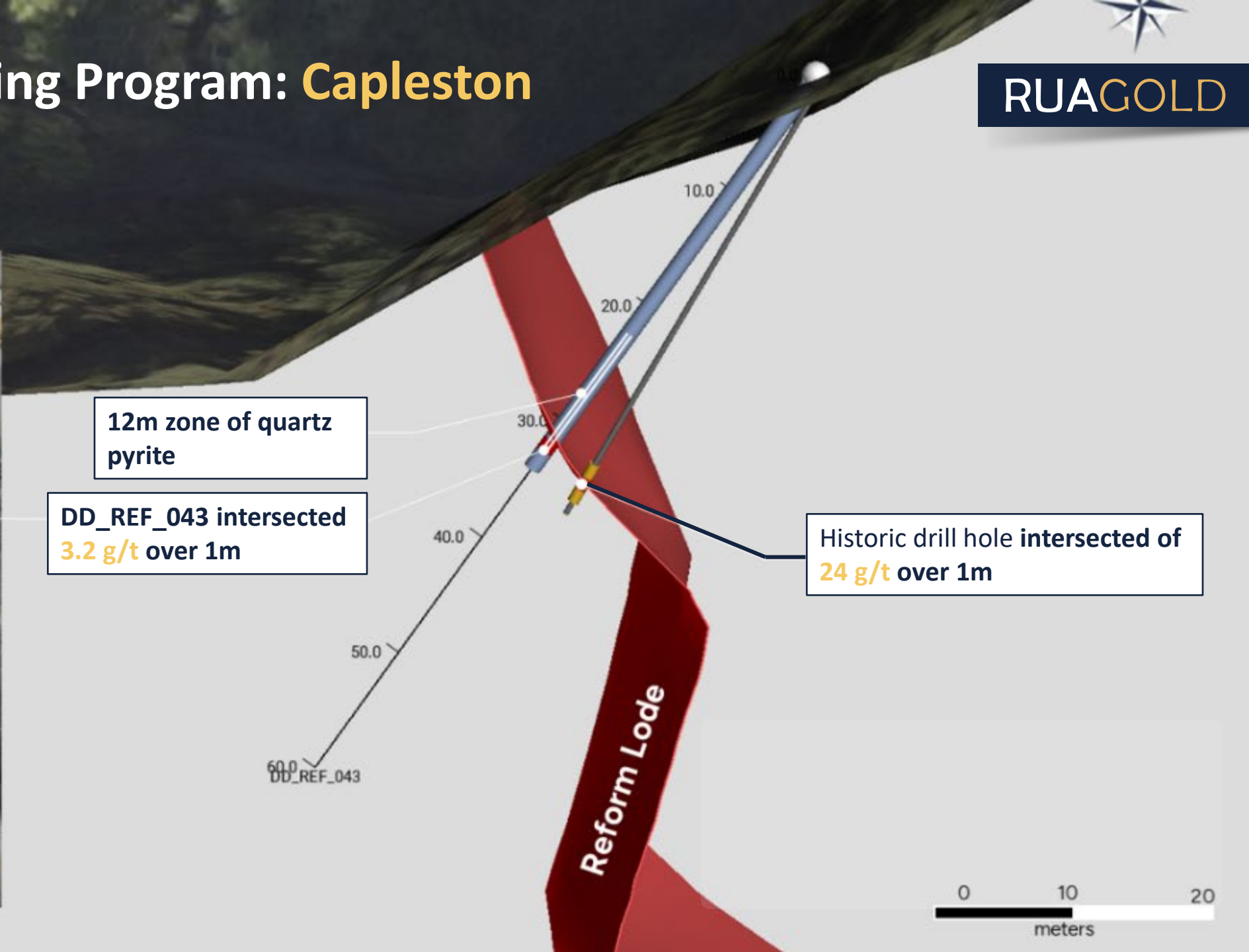


DD\_REF\_043 31.4-33.5m

12m zone of quartz pyrite

DD\_REF\_043 intersected 3.2 g/t over 1m

Historic drill hole intersected of 24 g/t over 1m



# REEFTON GOLDFIELD

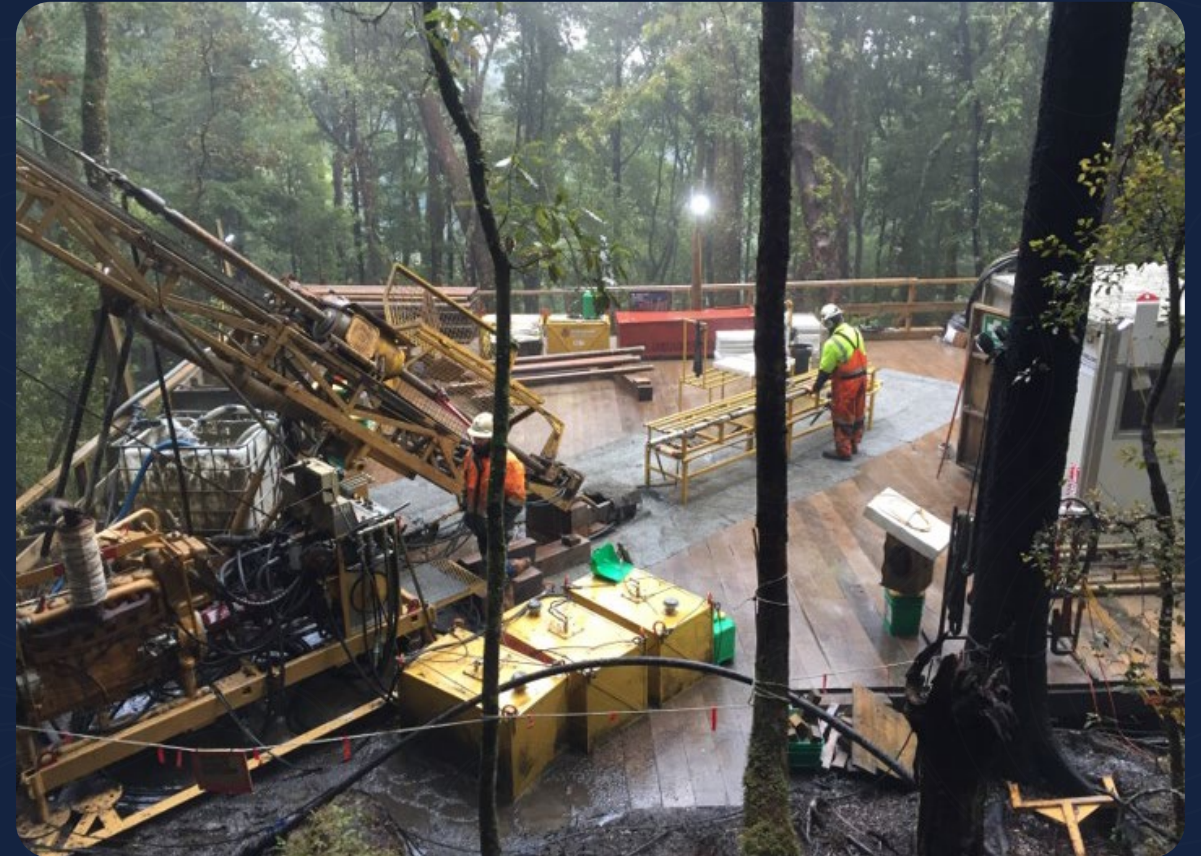
A forgotten historic gold mining district

Now **RUA GOLD** is back as the dominant player

**RUA**GOLD



Historic production of over  
**2Moz @ 9-50g/t Au**



2024  
**RUA GOLD** Is Bringing Reefton Back

# HAURAKI GOLDFIELD

## A Cornerstone of New Zealand Gold Mining

### GEOLOGY

Epithermal gold deposits are among the **highest gold grade** producers in the world

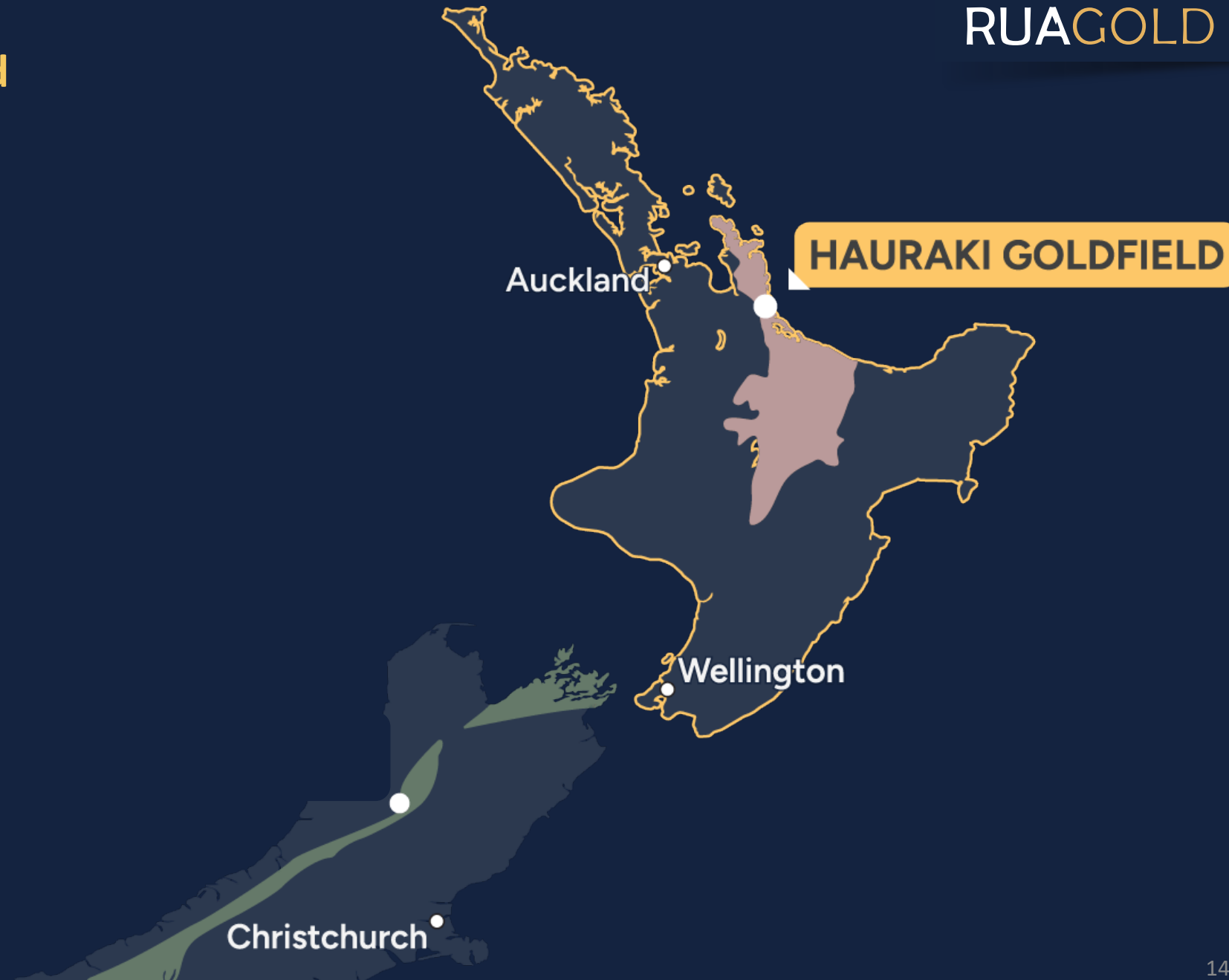
### HISTORY

The Hauraki Goldfield has produced **15M+ oz gold** and **60M+ oz silver**

### PRODUCTION

Neighboring mines are already producing significant amounts of **high-grade gold**

RUAGOLD



Glamorgan

2.8km

## OceanaGold's Wharekirauponga (WKP):

1M ounces (ind) @ 15.9g/t Au  
0.4M ounces (inf) @ 9.0g/t Au<sup>1</sup>

## OceanaGold's Waihi Mine:

Produced >10M ounces of Gold

<sup>1</sup>Source: OceanaGold R & R Annual Statement, February 21, 2024

# HAURAKI GOLDFIELD: Glamorgan

## Classic Features of Major Epithermal Au/Ag System

RUAGOLD

**3.8KM**

Untested zone of silicification, veining and alteration

Up to

**95 g/t Au**

Rock samples on surface

Gold in soils over 3.8km length

**>50ppb**

ACTIVE NEIGHBOUR

**Wharekirauponga (WKP)**

**2.8KM**

from Glamorgan

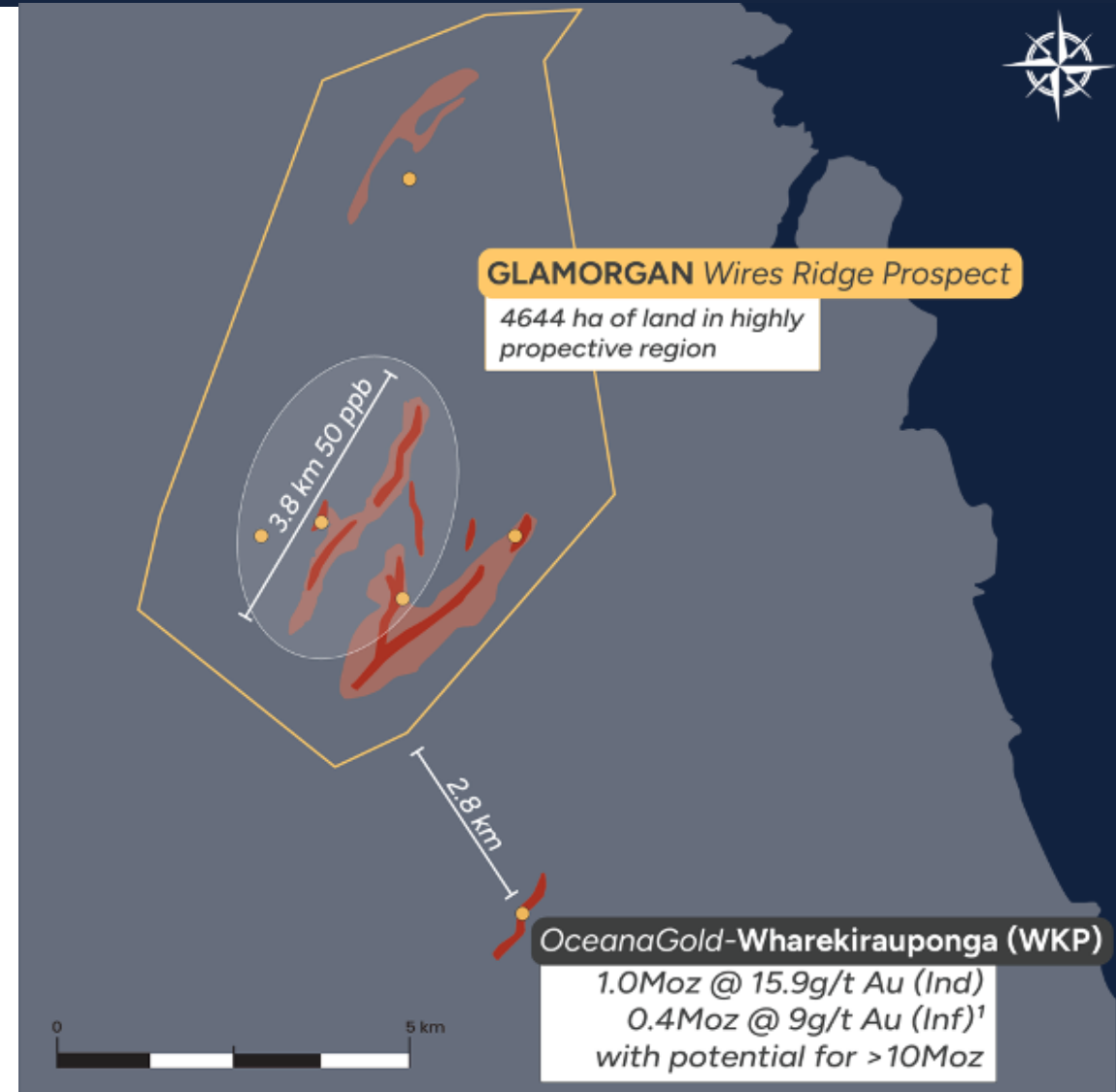
**1.0Moz @ 15.9 g/t Au (Ind)**

**0.4Moz @ 9g/t Au (Inf)<sup>1</sup>**

With potential for >10Moz

**PFS expected in December 2024**

**Included in the Fast Track Approval Process**



<sup>1</sup>Source: OceanaGold R & R Annual Statement, February 21, 2024



# A PROVEN TEAM, IN NEW ZEALAND, RIGHT NOW, READY TO DO IT AGAIN...

RUAGOLD

## WE KNOW NEW ZEALAND

Majority of our board and management have experience in New Zealand

## WE KNOW GOLD

\$11B+ in exits, 55+ years of experience in gold mining

## WE KNOW HOW TO FIND AND MINE GOLD

8 mines taken to production by team members

## NEW ZEALAND IS READY

Pro-mining NZ Government fast tracking approvals for mining companies

## THE MARKET IS READY

Gold prices are hitting all time highs

# RUAGOLD

TSX-V: **RUA**  
OTC: **NZAUF**  
WKN: **A4010V**

**Robert Eckford**

CEO and Director

1055 West Georgia Street, Suite 1500

Vancouver BC, V6E 4N7, Canada

email: [reckford@ruagold.com](mailto:reckford@ruagold.com)

[www.ruagold.com](http://www.ruagold.com)

